

# GOODSPEED MUSICALS

2009 SEASON

# A Funny THING HAPPENED ON THE WAY TO THE FORUM

AMERICA'S Funniest MUSICAL



# A unique relationship with every client.

That's where we come in.

Trust Company of Connecticut is pleased to help individuals, families and nonprofit organizations grow and protect their wealth.

Combining the intimacy of a local trust company and the resources of a well-established regional bank, our services are built upon the core belief that close personal attention will lead to lasting relationships.

To arrange a confidential meeting, please contact one of our trusted financial professionals.

**Hartford**

Dave Freese  
860.293.4140

**New Haven**

Clay Dean  
203.789.2779

**Westport**

Jim Donaldson  
203.227.7338

**West Springfield**

Bob Gibowicz  
413.747.1482



**TRUST COMPANY OF CONNECTICUT**  
A Division of NewAlliance Bank

**Investment Management • Trust Administration • Estate Administration**

[www.trustcompanyct.com](http://www.trustcompanyct.com)



Before



Actual patient photographs



Before



After

## Extreme Makeover Results!

Smile Reconstruction  
Filling Replacement  
Reshaping/Resizing  
Porcelain Veneers  
Dental Implants  
Restorations  
Composite Bonding  
Whitening  
Bite Adjustment  
**Free** Consultation

717 Newfield Street  
Middletown, CT

Conveniently located on Route 3,  
just minutes off Route 9...  
see directions on our website!

A sparkling, healthier smile really can be yours!  
*Painlessly*—and in less time than you may have  
imagined possible.

At *Advanced Cosmetic Dentistry*, superior dental  
procedures are combined with gentle, spa-like care  
for stunning results once only available to the  
Hollywood elite.

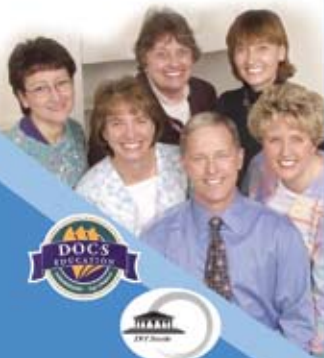
Your initial consultation is free—and will prove we  
can make a difference that will have you smiling.

To view more patient photos visit our website:

[www.DrPeterNelson.com](http://www.DrPeterNelson.com)

To schedule your free consultation, call:

**860-347-1227**



*Advanced*  
**COSMETIC  
DENTISTRY**

*The difference will have you smiling!*

# Dive into History at the Connecticut River Museum



## Adventure, Discovery & History in the Making



### RIVER CRUISES

Explore the natural beauty and heritage of New England's Greatest River with on-water expeditions. Seasonal daily cruises and group tours available.



### INTERACTIVE EXHIBITS

Climb aboard a working replica of the the world's first submarine. Pedal the pedals, crank the cranks, and learn about its role in the American Revolution.



### EVENTS

They burned our ships and stole our rum! The British raid on Essex comes to life in the Burning of the Fleet exhibit. And don't miss the annual May parade and re-enactment.



### EDUCATION

Discover the River's rich history and unique environment. Hands-on workshops, school programs, summer camps, and adventures for all ages.



Connecticut River Museum

67 MAIN STREET  
ESSEX, CT 06426

860-767-8269

[www.ctrivermuseum.org](http://www.ctrivermuseum.org)

DISCOVER NEW ENGLAND'S GREAT RIVER. 410 MILES OF WATER AND 450 YEARS OF HISTORY.



# GOODSPEED MUSICALS®

## what's inside

- A Funny Thing Happened on the Way to the Forum* | 5**
- Cast of Characters | 6**
- Musical Numbers | 7**
- Who's Who | 8**
- About the Authors | 14**
- Past Productions | 25**
- Program Notes | 26**
- History of the Goodspeed Opera House | 28**
- About Goodspeed Musicals | 29**
- William H. Goodspeed Legacy Society | 30**
- The Goodspeed Opera House Foundation | 31**
- Goodspeed Membership | 32**
- Goodspeed Musicals Staff | 37**
- For Your Information | 38**

Audio and video recording and photography are prohibited in the theatre.

Please turn off your cell phone, beeper, watch alarm or anything else that might make a distracting noise during the performance. Unwrap any candies, cough drops or mints before the performance begins to avoid disturbing your fellow audience members or the actors on stage. We appreciate your cooperation.

Editor: Lori A. Cartwright



### ADVERTISING

OnStage Publications  
937-424-0529 | 866-503-1966  
e-mail: korlowski@jusbiz.com  
[www.onstagepublications.com](http://www.onstagepublications.com)

The Goodspeed Musicals program is published in association with OnStage Publications, 1612 Prosser Avenue, Dayton, OH 45409. The Goodspeed Musicals program may not be reproduced in whole or in part without written permission from the publisher. JBI Publishing is a division of OnStage Publications, Inc. Contents © 2009. All rights reserved. Printed in the U.S.A.



# GOODSPEED MUSICALS®

*Gratefully Acknowledges the Following  
Supporters for 2009*

### CORPORATE SUPPORT

- Bank of America
- Blum Shapiro
- Centerbrook Architects and Planners
- COMCAST
- Connecticut Light & Power Company
- DeWitt Stern Group, Inc.
- Dominion Resources Services, Inc.
- Essex Savings Bank
- Hoffman Audi
- The Inn at Middletown
- Liberty Bank
- Mohegan Sun
- National Alliance for Musical Theatre
- NewAlliance Bank
- Robinson & Cole LLP
- The Suzio York Hill Companies
- Updike, Kelly & Spellacy, P.C.
- Webster Bank
- WSHU Public Radio Group
- WTNH News Channel 8

### FOUNDATION SUPPORT

- Anonymous (1)
- Acorn Alcinda Foundation, Inc.
- The Adolph and Ruth Schnurmacher Foundation, Inc.
- The Aeroflex Foundation
- Aldo DeDominicis Foundation
- The ASCAP Foundation - Irving Caesar Trust
- The Christine E. Moser Foundation
- Daphne Seybolt Culpeper Memorial Foundation
- The Max Showalter Foundation
- Maximilian E. and Marion O. Hoffman Foundation
- The Nederlander Foundation
- NewAlliance Foundation
- Newman's Own Foundation
- The Noel Coward Foundation
- The Rodgers and Hammerstein Foundation
- The Samuel and Rebecca Kardon Foundation
- SBM Charitable Foundation, Inc.
- The Shubert Foundation, Inc.

### GOVERNMENT SUPPORT

- With Support from the
  - Connecticut Commission on Culture & Tourism
  - National Endowment for the Arts

**CONNECTICUT**  
1-888-CTVisit / CTVisit.com




### SPECIAL THANKS TO

- Duncan Edwards of Audio Design International, a division of ADI Group
- Bella Rosa International, Inc.
- Cross Island Ferry Services, Inc.
- HarperCollins Publishers
- HMS Media, Inc.
- Leros Point to Point, Inc.
- The Penguin Group
- The Piano & Organ Warehouse
- White Rocket Wine Company

# Encouraging imagination. Applauding innovation.

Those who march to a different drummer share our passion for creativity and out-of-the-box thinking. That's why Bank of America is proud to support Goodspeed Musicals where the innovative spirit and fresh, new ideas are helping expand all our horizons.

Visit us at [www.bankofamerica.com](http://www.bankofamerica.com).

Bank of America, N.A. Member FDIC.  
Equal Housing Lender   
© 2009 Bank of America Corporation.  
All rights reserved. SPN-56

**Bank of America** 

## Enjoy the performance!

The law firm of  
Robinson & Cole is  
proud to support  
Goodspeed Opera House.

*For more information  
call David Bogan at  
(860) 275-8262.*



**ROBINSON & COLE** LLP  
ATTORNEYS AT LAW

RC.COM • HARTFORD • BOSTON • STAMFORD • NEW YORK • WHITE PLAINS • NEW LONDON • PROVIDENCE • ALBANY • SARASOTA



presents

# A Funny THING HAPPENED ON THE WAY TO THE FORUM

Music and Lyrics by **STEPHEN SONDHEIM**  
Book by **BURT SHEVELOVE** and **LARRY GELBART**  
with

**JASON BABINSKY MARK BAKER MICHAEL BIREN NAT CHANDLER KURT DOMONEY  
EMILY SUSANNE FRANKLIN SEMHAR GHEBREMICHAEL MARY GUTZI ADAM HELLER LAURA KELLER  
KARA KIMMER STEVE KONOPELSKI STEPHANIE LYNN NELSON ABBEY O'BRIEN SAM PINKLETON  
KRISTA SAAB JOHN SCHERER EMILY THOMPSON RON WISNISKI DAVID WOHL**

Scenic Design by  
**JAMES NOONE**

Costume Design by  
**MARTHA BROMELMEIER**

Lighting Design by  
**KIRK BOOKMAN**

Original Costume Design by **TONY WALTON**

Sound by  
**JAY HILTON**

Hair & Wig Design by  
**MARK ADAM RAMPMEYER**

Orchestrations by  
**DAN DeLANGE**

Assistant Music Director  
**WILLIAM J. THOMAS**

Associate Choreographer  
**CAROL SCHUBERG**

Production Manager  
**R. GLEN GRUSMARK**

Production Stage Manager  
**BRADLEY G. SPACHMAN**

Casting by  
**STUART HOWARD, AMY SCHECTER,  
& PAUL HARDT, CSA**

Associate Producer  
**BOB ALWINE**

Line Producer  
**DONNA LYNN COOPER HILTON**

Music Director  
**MICHAEL O'FLAHERTY**

Directed and Choreographed by  
**TED PAPPAS**

Produced for Goodspeed Musicals by  
**MICHAEL P. PRICE**

---

First Performance: Sept. 25, 2009

---

*Goodspeed Musicals is dedicated to the heritage of the musical and the development of new works to add to the repertoire.*

Sponsored by:

**Bank of America** 



**Connecticut  
Light & Power**

# Cast of Characters

(In order of appearance)

Pseudolus **ADAM HELLER**  
Proteans **JASON BABINSKY, KURT DOMONEY,  
STEVE KONOPELSKI**  
  
Hero **SAM PINKLETON**  
Philia **EMILY THOMPSON**  
Senex **DAVID WOHL**  
Domina **MARY GUTZI**  
Hysterium **JOHN SCHERER**  
Marcus Lycus **RON WISNISKI**  
Tintinabula **STEPHANIE LYNN NELSON**  
Panacea **SEM HAR GHEBREMICHAEL**  
Geminæ **ABBIE O'BRIEN, KRISTA SAAB**  
Vibrata **KARA KIMMER**  
Gymnasia **LAURA KELLER**  
Erronius **MARK BAKER**  
Miles Gloriosus **NAT CHANDLER**

SWINGS

**MICHAEL BIREN**  
**EMILY SUSANNE FRANKLIN**

DANCE CAPTAIN

**STEPHANIE LYNN NELSON**

ASSISTANT STAGE MANAGER

**DEREK MICHAEL DiGREGORIO**

UNDERSTUDIES

Pseudolus **RON WISNISKI**; Hero, Hysterium **MICHAEL BIREN**; Philia **EMILY SUSANNE FRANKLIN**;  
Senex **MARK BAKER**; Erronius, Marcus Lycus **JASON BABINSKY**; Domina **STEPHANIE LYNN NELSON**;  
Miles Gloriosus **KURT DOMONEY**; Gymnasia, Tintinabula, Vibrata, Geminæ,  
Panacea **EMILY SUSANNE FRANKLIN**

ORCHESTRA

Conductor/Keyboard I **MICHAEL O'FLAHERTY**; Associate Conductor/Keyboard II **WILLIAM J. THOMAS**;  
Trumpet **MARK SLATER**; Trombone **SCOTT BEAN**;  
Violin **KARIN FARGERBURG**; Reeds **LIZ BAKER SMITH**; Percussion **SALVATORE RANNIELLO**

ALTERNATES

Keyboard II **MOLLY STURGES**; Trumpet **TOM CONTI, LARRY GAREAU, KEN ROE**;  
Trombone **DAVID KAYSER, TOPHER LOGAN**; Violin **DIANE ORSON**; Reeds **MICHAEL SCHUSTER**;  
Percussion **STEVE COLLINS, DAVID EDRICKS**

*Out of respect for our actors and your fellow theatergoers, we ask that you remain seated until the curtain calls are over and the house lights have come up. The use of cameras, cellular phones, or recording devices is not permitted in the theatre. Thank you.*



# Musical Numbers

## 200 B.C., A Street in Rome

### Act One

<i>Comedy Tonight</i> .....	<i>Prologus, The Proteans, and The Company</i>
<i>Love, I Hear</i> .....	<i>Hero</i>
<i>Free</i> .....	<i>Pseudolus, Hero</i>
<i>The House of Marcus Lycus</i> .....	<i>Lycus, Pseudolus, and The Courtesans</i>
<i>Lovely</i> .....	<i>Hero, Philia</i>
<i>Everybody Ought to Have a Maid</i> .....	<i>Senex, Pseudolus, Hysterium, Lycus</i>
<i>I'm Calm</i> .....	<i>Hysterium</i>
<i>Impossible</i> .....	<i>Senex, Hero</i>
<i>Bring Me My Bride</i> .....	<i>Miles Gloriosus, Pseudolus, The Courtesans, and The Proteans</i>

### Act Two

<i>That Dirty Old Man</i> .....	<i>Domina</i>
<i>That'll Show Him</i> .....	<i>Philia</i>
<i>Lovely (Reprise)</i> .....	<i>Pseudolus, Hysterium</i>
<i>Funeral Sequence and Dance</i> .....	<i>Pseudolus, Miles Gloriosus, The Courtesans, and The Proteans</i>
<i>Comedy Tonight (Reprise)</i> .....	<i>The Company</i>

*There will be a 15-minute intermission between acts.*

# To Our Members

## Thank You

for your help in making this  
an outstanding season!

We look forward to seeing you in 2010.

### *Please Renew Your Membership!*



# WHO'S WHO



**MARK BAKER\*** (*Erronius*) 1990 Helen Hayes Award, *Grand Hotel* (Otto Kringlein; Tommy Tune, director). Current: Artistic Director for New Embassy Theatre, Cumberland, Maryland. Favorite roles: *Tru* (Sarasota Theatre Works), *Candide* (Tony nomination, Theatre World Award; Hal Prince, director), *A Hunger Artist*, *The Lady in Question* (Baroness, Actress), *Art* (Yvan), *The School for Wives* (Amolphe), *Cabaret* (Emcee), *The Beggars' Opera* (Peachum), *The Mystery of Irma Vep*. Concerts: Rollo in *Tip-Toes* (with Emily Loesser, Carnegie Hall), *The Sunshine of Paradise Alley* (Delaware Theatre Company). TV/film: "St. Elsewhere" (Buddy Askew), *Smithereens*, *Valentino*, *Swashbuckler*, *Raggedy Ann and Andy* (Grammy, Best Children's Song). Broadway: *Habeas Corpus* (Dennis), *Via Galactica*.



**NAT CHANDLER\*** (*Miles Gloriosus*) Goodspeed Opera House debut. Broadway: *The Scarlet Pimpernel*, Encores! *The Ziegfeld Follies of 1936* (Sony Records). National Tours: *The Phantom of the Opera*, *The Music of Andrew Lloyd Webber* with Sarah Brightman, *Into the Woods*, *The King and I* with Yui Brynner, *Camelot* with Robert Goulet. Off-Broadway: *Counselor-at-Law*, *Tales of Tinseltown*. Regional: *Phantom!* (Barrymore Award Nomination), *A Little Night Music*, *Beauty and the Beast*, *The Secret Garden*, *Show Boat*, *The Most Happy Fella*, *Pirates of Penzance*, *Forum* (Kevin Kline nomination), *Carousel*, *Oklahoma!*, *Cabaret*, *Desert Song*, *The Merry Widow*, *Kismet*, *South Pacific* with Howard Keel. Television: "Guiding Light." www.natchandler.com



**MARY GUTZI\*** (*Domina*) Mary's career has spanned the U.S. as well as Canada in many shows and concerts. Favorite roles include Emma Goldman in *Ragtime* (U.S. Premiere, Vancouver, Chicago [Jeffrey Nom]), National Tour companies), Grizabella in *Cats* (National Tour), and Fantine in *Les Misérables* (Broadway). She has also played Madame Tenardier (*Les Misérables*), Norma Desmond (*Sunset Boulevard*), Countess Aurelia (*Dear World*, Barrymore Nom), Aldonza (*Man of La Mancha*), Rita (*Lucky Stiff*), Golde (*Fiddler on the Roof*), Annie (*Annie Get Your Gum*), Adelaide (*Guys and Dolls*), and the new musical *Take Two*. She is a director, vocal and acting coach, and has taught Musical Theatre for AMDA in LA.



**ADAM HELLER\*** (*Pseudolus*) Goodspeed: *A Tree Grows in Brooklyn*. Recent projects include: *My Name is Asher Lev* (Arden Theater), *Dancing in the Dark* (Old Globe). Broadway: *Caroline, or Change*, *A Class Act*, *Victor/Victoria*, *Les Misérables*. Off-Broadway: *Make Me a Song* (New World Stages), *Endgame* (Irish Rep), *Normal* (Transport Group), *The Immigrant* (New World Stages), *Merrily We Roll Along* (York). Tours: *Titanic*, *Falsettos*. Regional: *End Days* (Vineyard Playhouse), *Party Come Here* (Williamstown), *Merrily We Roll Along* (Kennedy Center Sontheim Celebration), *Art* (Hartford Theaterworks), *Dinner With Friends* (Coconut Grove), *Ragtime* (Sacramento), *Falsettos* (Hartford Stage). TV: "The Sopranos," "Law & Order" (All); "Oz." Graduate: NYU/ Tisch.



**SAM PINKLETON** (*Hero*) is thrilled to be making his Goodspeed debut! A recent graduate of NYU/Tisch, New York credits include Witness Relocation's *The Blue Bird* and *Haggadah*, Les Freres Corbusier's *Dance Dance Revolution*, and Theater Mitu's *Hair*, as well as *In Trousers*, *Only Children*, and *Cabaret* (Emcee). Regional: *My Fair Lady*, *Annie*, and *Jump 'n' Jive* (Weathervane Rep). Enormous thanks to Ted, Paul, and Michael/The Bret Adams Gang for this incredible opportunity. Love to Kim, Alan & Co.



**JOHN SCHERER\*** (*Hysterium*) last appeared at Goodspeed as *George M!* for which he received the Connecticut Critics Circle Award. Broadway: *Lovemusik* (directed by Harold Prince), *By Jeeves* (directed by Sir Alan Ayckbourn), *Sunset Boulevard*, *The Most Happy Fella*. Off Broadway: *Junie B. Jones*, *Out of this World*, *Olympus on My Mind*, *Dames at Sea*. National Tours: *Cats*, *42<sup>nd</sup> Street*, *Mame*, *Hello, Dolly!*. Regional: Kennedy Center, Arena Stage, Goodman Theater, Ahmanson Theater, Pittsburgh Public, Paper Mill Playhouse and many others. Film and television: *Spinning Into Butter*, "Crossing Jordan," "The Shield," "Law & Order" (all three series), "Titus," "Guiding Light." Recordings: *Lovemusik*, *By Jeeves*, *3hree*, *Andrew Lloyd Webber: Now and Forever*.



**EMILY THOMPSON** (*Philia*) Emily is so grateful to be returning to Goodspeed after this season's *42<sup>nd</sup> Street!* Other credits include the National Tour of *Irving Berlin's I Love a Piano*; Astoria PAC's *Ragtime* (Bright); *Crazy For You* (Polly) and *Oklahoma* (Ado Annie) at the Mac-Haydn Theatre; *Kiss Me, Kate* (Lois Lane/Bianca); and the

\*Member of Actors' Equity Association, the Union of Professional Actors and Stage Managers in the United States.



# WHO'S WHO

2008 season at Maine State Music Theatre. BFA in Musical Theatre from Emerson College. She would like to thank Ted and all the staff at Goodspeed for this opportunity, and her fabulous family and friends for their support.



**RON WISNISKI\*** (*Marcus Lycus*) has appeared at Goodspeed in *Me and My Girl*, *Finian's Rainbow*, *Annie*, *Bells Are Ringing*, and *Gotham!*. National Tours: *Beauty and the Beast* (Lumiere), *Annie* (FDR), and *Tintypes* (Teddy Roosevelt).

Off-Broadway: George Abbott's *Frankie, A Most Secret War*, *Pillars of Society*, *Up Against It* and *Tom Jones*. His other credits number more than 100 plays and musicals at theatres nationwide including Sacramento Music Circus, American Musical Theatre of San Jose, North Shore Music Theatre, Pittsburgh Public Theatre, Florida's Riverside Theatre, Syracuse Stage, Pittsburgh CLO, and Arrow Rock Lyceum. Connecticut Critics Circle Award winner and three-time IRNE Award nominee.



**DAVID WOHL\*** (*Senex*) Broadway: *Fiddler on the Roof*, *Dinner at Eight*, *The Man Who Had All the Luck*. Recent Off-Broadway: EST, Rattlestick, Abingdon, SPF. Regional: Taper, La Jolla, Paper Mill, George Street, LATC, Williamstown, NY Stage and Film (as director). Recent film: *The Wackness*; Other: *Changing Lanes*, *Joe Gould's Secret*, *Saving Private Ryan*, *Hot Shots! Part Deux*, *Switch*, *Presumed Innocent*, *War of the Roses*, *Troop Beverly Hills*, *Cookie*, *Brewster's Millions*, *Revenge of the Nerds*, *Sophie's Choice*. Recent TV: "Rescue Me"; Other: series regular on "Brooklyn Bridge," "DEA," "Once a Hero," "Hey Arnold!," many episodics and TV movies. Thanks to Ted Pappas, Goodspeed, and S.B.H. McMahon, Ltd.



**JASON BABINSKY\*** (*Protean*) Goodspeed debut. Credits include *The Full Monty* (Paper Mill Playhouse); *She Loves Me* (Huntington Theatre, Williamstown Theatre); *Chicago* (Pioneer Theater); *Hello, Dolly!* (Hangar Theatre); and *West Side Story* (North Shore Music Theatre).

He has toured with *Seven Brides for Seven Brothers* and *Dr. Dolittle*. He won the Kevin Kline Award for Best Actor in *The Bomb-itty of Errors* at the Repertory Theatre of St. Louis. Upcoming films: *Law Abiding Citizen* and *You Don't Know Jack*. Love and thanks to D and Howie.



**KURT DOMONEY\*** (*Protean*) happily returns to Goodspeed where he was last seen in *Very Good Eddie*. Broadway: *A Chorus Line* (Don, revival company). Tours: *42nd Street* (1st National), *Irving Berlin's White Christmas* (St. Paul). Off-Broadway: *All Is Love* (NYMF), *A Naughty Knight* (Duke Theatre), *Roadside* (York). Regional: Action in *West Side Story* (Houston TUTS), Billy in *Urinetown* (Geva Theatre), Skimbleshanks in *Cats* (Sacramento Music Circus), Bobby in *A Chorus Line* (Ogunquit), *Hot Mikado* (Ford's Theatre), Pittsburgh CLO, Muny, Cape Playhouse. Graduate of Cincinnati College-Conservatory of Music. [www.kurtdomoney.com](http://www.kurtdomoney.com)



**SEM HAR GHEBREMICHAEL\*** (*Panacea*) is thrilled to be a part of this wonderful production! Credits include: *The Lion King* (Cheetah Tour), *Monty Python's Spamalot* (Las Vegas), MTV Video Music Awards, Toni Braxton "Libra" tour, Fashion Rocks!, "Saturday Night Live," "30 Rock," and commercials for Mohegan Sun, Wendy's, and E\*Trade. Thanks to all at CTG! Love to my amazing support system - Ma, Daddy, and Asmeret.



**LAURA KELLER\*** (*Gymnasia*) is thrilled to be making her Goodspeed debut in *Forum*. Other regional credits include *La Cage aux Folles*, *On the Town*, and *The Best Little Whorehouse in Texas*. Laura is a graduate of The Rock School of the Pennsylvania Ballet. Thanks and love to friends and family, especially Mom. Always, for Dad.



**KARA KIMMER\*** (*Vibrata*) Received her BA in Musical Theatre Dance from Oakland University, MI. Her credits: *Fame* in Atlantic City, *High School Musical*, Janis Joplin in *Beehive*, *Joseph and the Amazing Technicolor Dreamcoat*, *Pirates of Penzance* at the Detroit Opera House.

She is a former NBA Detroit Pistons Dancer originally from Durand, Michigan, now living in New York City.



## WHO'S WHO



**STEVE KONOPELSKI\*** (*Protean*) is thrilled to be a part of this production of *Forum*. Graduate of the Royal Winnipeg Ballet School's Professional Division. Broadway credits include: *Gypsy* with Patti LuPone (L.A.), *Beauty and the Beast* (Cheesegrater), *Hot Feet* (Ensemble).

Regional favorites: *White Christmas* (Dance Captain), *West Side Story* (Baby John, Dance Captain), *Cats* (Pouncival, u/s Mistoffeoles), *Guys and Dolls*. Assistant Choreographer on *Oliver!* National Tour. Pablo on "The Backyardigans." Special thanks to Mom, Dad, Rob, and Monty. CTR



**MICHAEL BIREN** (*Swing*) is thrilled to be in his first show at Goodspeed. Michael holds a BS in Biology and a BA in Theatre from Muhlenberg College. Favorite credits include the International Tour of *Cinderella* with Lea Salonga. Regional: *Gangster*, *Drowsy Chaperone* (Maine State Music Theatre); Mike, *A Chorus Line* (Ogunquit Playhouse); Doody, *Grease* and Dromio of Ephesus, *The Boys from Syracuse* (Surlflight); Riff, *West Side Story* (Prince Music Theatre); Jack, *Into the Woods* (The Ritz). Thanks to DMSRC.



**STEPHANIE LYNN NELSON\*** (*Tintinabula*) is delighted to be collaborating again with Ted Pappas for her Goodspeed debut. Her credits include performances with the Metropolitan Opera, Seattle Opera, Pittsburgh Public Theater, Arizona Theater Co., The Cape Playhouse, Maltz Jupiter Theater, Kansas City Rep., and Central City Opera, where she recently portrayed Petra in *A Little Night Music* and Anita in *West Side Story*. She holds a BFA in Dance Performance from the University of Missouri-Kansas City and is a proud member of Actor's Equity and AGMA.



**EMILY SUSANNE FRANKLIN** (*Swing*) is thrilled to join Goodspeed for her favorite kind of music: Sondheim! A proud graduate of Florida State University's music theatre program, previous credits include *42<sup>nd</sup> Street* (Anytime Annie), *Lady Be Good* (Daisy), *A Chorus Line* (Val), *Oklahoma!* (Ado Annie), *The Pajama Game* (Gladys), *Don't Hug Me* (Bernice), and *Singin' in the Rain* (Lady in Green). Her pet passion is stage combat. Trained in seven weapons, she recently served as fight director for *Ragtime* and *Reviving Ophelia*.



**ABBEY O'BRIEN\*** (*Geminae*) is excited to be spending the fall at Goodspeed. Credits: Broadway's Tony-nominated *Pal Joey*, Broadway's Tony Award-winning cast of *Spamalot*, Radio City Rockettes, *No Strings* (Encores!), *Sinatra* (Radio City), *Anything Goes* (Virtue/K.C.

Starlight), *The Will Rogers Follies* (Music Circus), *Chicago* (Assistant Choreographer/Ogunquit Playhouse), *A Chorus Line* (Judy Turner/Helen Hayes), "The David Letterman Show," The 2004 Tony Awards Show with Hugh Jackman. She is thrilled about her new venture, AbbeyO Designs, a line of bags and yoga accessories. [abbeyodesigns@gmail.com](mailto:abbeyodesigns@gmail.com)

**MICHAEL P. PRICE** (*Executive Director*) is now in his 41st year as Executive Director of Goodspeed Musicals. Under his direction the Goodspeed became known for its dedication to the American musical and the development of new works of this genre, including *Annie* and *Shenandoah*. He has received two special Antoinette Perry (Tony) Awards. He is chairman of the Connecticut Commission of Culture and Tourism. Mr. Price is a founding member and past vice president of the National Alliance for Musical Theatre. He is the founder of the League of Historic Theatres and served as its first president. He is the vice president of the American Theatre Wing and is a member of the Tony Awards Management Committee. He earned a B.A. from Michigan State, an M.A. from Minnesota University, and an M.F.A. from Yale. Michael is the recipient of honorary doctorates in fine arts, *honoris causa*, from Connecticut College and the University of Hartford.



**KRISTA SAAB\*** (*Geminae*) Goodspeed Debut! Broadway/NY Theatre: *Pal Joey* (2009 Revival-Roundabout Theatre Company), *Camelot* (Lincoln Center), Radio City Rockette (Radio City Music Hall). Tours/Regional: *Carnival!* (Kennedy Center), *Crazy for You*, *42<sup>nd</sup> Street*. TV/ *Gangster*, *The Great Observer*, "The Ellen Degeneres Show," "PBS Live from Lincoln Center." Happy "Canadian" Thanksgoing to my family and love always to Ryan! [www.stagedooraccess.com](http://www.stagedooraccess.com)

**BOB ALWINE** (*Associate Producer*) Before joining Goodspeed, Bob worked as the Associate Managing Director of The Old Globe in San Diego, California, and the Director of Programming for The Ordway Center in St. Paul, Minnesota. While at the Globe he developed the national tour of *Stones in His Pockets* and at the Ordway he was the associate producer of the national tour of *Buddy: The Buddy Holly Story*. Bob holds an MFA in theater management and creative producing from Columbia University.

\*Member of Actors' Equity Association, the Union of Professional Actors and Stage Managers in the United States.



## WHO'S WHO

**DONNA LYNN COOPER HILTON** (*Line Producer*) is in her 22<sup>nd</sup> season at Goodspeed and assumed the duties of Line Producer in December 2006. She previously served as Goodspeed's Production Stage Manager and has worked on over 60 Goodspeed productions, beginning with *Wonderful Town* in 1988. As PSM she transferred Goodspeed's production of *Gentlemen Prefer Blondes* to Broadway. Donna Lynn currently serves as co-chair of the Selection Committee for the National Alliance for Musical Theatre's New Works Festival and served as a consulting producer for the 2007 Festival. She has lectured at the Yale University School of Drama and Southern Connecticut State University. A native of North Carolina and a graduate of East Carolina University, Donna Lynn and her husband, Goodspeed Lighting & Sound Supervisor Jay Hilton, make their home in East Haddam with Jack.

**TED PAPPAS** (*Director & Choreographer*) happily returns to Goodspeed for his 6<sup>th</sup> production. Previous shows here include *Promises, Promises*; *Kiss Me, Kate*; and *On The Twentieth Century*. He recently began his 10<sup>th</sup> season as Producing Artistic Director of Pittsburgh Public Theater, where his work as a director encompasses an extraordinary range of styles and periods: from Sophocles' *Oedipus The King*, Shakespeare's *Much Ado About Nothing*, and Schiller's *Mary Stuart* to the American premiere of Ayckbourn's *RolePlay*, Shaffer's *Amadeus*, and Sondheim's *Sweeney Todd*. He has enjoyed a distinguished career as director and choreographer for some of North America's great companies, including Joseph Papp's Public Theater, Williamstown Theatre Festival, Playwrights Horizons, The Canadian Opera, Toronto's Royal Alexandra, and New York City Opera under the leadership of Beverly Sills. He has worked on and off Broadway, at the Cannes Film Festival, in Las Vegas for impresario Steve Wynn, and on television where he served as choreographer for NBC's "Saturday Night Live." A graduate of Northwestern University with a Masters degree from Hunter College, Ted is a past president of the Stage Directors and Choreographers Society, the national labor union. For Betty

**JAMES NOONE** (*Scenic Design*) Broadway: *A Bronx Tale*, *Come Back Little Sheba*, *Urban Cowboy*, *A Class Act*, *Judgement at Nuremberg*, *Jekyll and Hyde*, *Night Must Fall*, *The Rainmaker*, *Getting and Spending*, *The Gin Game*, *The Sunshine Boys*, *Inherit the Wind*. Off-Broadway: *The Persians*, Neil Simon's *Hotel Suite* (Roundabout), *The Women in Black*, *Fully Committed*, *Full Gallop*, Edward Albee's *Three Tall Women*, *Frankie and Johnny in the Clair de Lune*, *Boys in the Band*, *Ruthless!*, *Breaking Legs*, *The Time of the Cuckoo* (Lincoln Center Theatre), Manhattan Theatre Club, Playwrights Horizons, Manhattan Class Company, Atlantic Theatre Co., Vineyard Theatre, Second Stage, and many others. National tours: *Jekyll and Hyde*, *The Belle of Amherst* (with Julie Harris), *Full Gallop*, *Deathtrap*, *Three Tall Women*, *Breaking Legs*. Opera:

New York City Opera, Glimmerglass Opera, Washington Opera, LA Opera, Canadian Opera Co., Chicago Lyric Opera. Regional: Multiple Theatres over the past 26 years including many productions at Goodspeed Musicals.

**MARTHA BROMELMEIER** (*Costume Design*) Most recently designed the world premiere of *Harry's Friendly Service Station* for Pittsburgh Public Theater. New York credits: Playhouse 91, *Menopause: The Musical*; The Century Theatre, *The Gorey Details*; The Blue Heron Theatre, *Sacred Journey*; LaMama, *God, the Devil and the Crackhouse*; Naked Angels, *Saturday Mourning Cartoons*, *Naked Faith*, and *The Stand In*; Primary Stages, *The Joy Solution*, *At The Still Point*. Regional Theatre designs: Goodspeed Musicals, *Double Trouble*, *Gotham!*, *Glimmerglass*, *Where's Charlie?* (co-designer with Tony Walton); Pittsburgh Public Theatre, *Falsettos*, *Sweeney Todd*, *A Funny Thing Happened on the Way to the Forum*, *The Odd Couple*, *The Gin Game*, *Role Play*; Bay Street Theatre, *The Who's Tommy*; Barrington Stage, *Tea*. Associate Designer with William Ivey Long for *Princesses*, *Sweet Charity*, *The Producers*, *Cabaret*, *A Christmas Carol*, and *Hairspray*. [www.marthab.com](http://www.marthab.com)

**KIRK BOOKMAN** (*Lighting Design*) Goodspeed: *Singin' in the Rain*, *High Button Shoes*. Broadway: The National Actors Theatre: *The Sunshine Boys* (Jack Klugman and Tony Randall), *The Gin Game* (Julie Harris and Charles Durning), *Gentlemen Prefer Blondes*. Other New York: Joyce Theater: Kansas City Ballet, *What Then*, *The Cook*, *Recent Tragic Events* for Playwrights Horizons (Heather Graham), *Shangai Moon* for Drama Department (Charles Bush). N.A.T.: *Right You Are*. *Mondo Drama*, *Havana is Waiting*, *Force Continuum*, *My One Good Nerve* (starring Ruby Dee), *The Green Heart* at Manhattan Theatre Club, *The Shawl*, *The Book of Liz* (David and Amy Sedaris), *Les MizRahi* (Isaac Mizrahi), *Hope is the Thing with Feathers*, *As Thousands Cheer*, and *June Moon*.

**JAY HILTON** (*Sound Design*) Jay is proud to be in his 25<sup>th</sup> season with Goodspeed. Since 1985 he has designed or provided sound for nearly 70 productions at the Opera House and well over 50 productions at Goodspeed's Norma Terris Theatre in Chester. Jay's sound effects have been heard on Broadway, national tours and at regional theatres from coast to coast. In addition to his design duties Jay serves as Goodspeed's Lighting & Sound Supervisor. Jay and his wife, Goodspeed's Line Producer Donna Lynn Hilton, make their home (and garden) in East Haddam. Jay would like to thank his splendid staff for their hard work and dedication.



## WHO'S WHO

**MARK ADAM RAMPMEYER** (*Hair & Wig Design*) Mark is very happy to return to Goodspeed for this production. His work was last seen here in *42<sup>nd</sup> Street*. He recently completed work on the Hartford Stage Company production of *The Milk Train Doesn't Stop Here Anymore* starring Olympia Dukakis. Other credits: *Kiss Me, Kate*; *Steel Magnolias*; and *A Wonderful Life* for Papermill Playhouse. *Carmen, The Musical*; *The Adding Machine*; and *The Deception* for La Jolla Playhouse. *Lend Me a Tenor, Always...Patsy Cline*, and *Man of La Mancha* for The John W. Engeman Theater. Mark had the pleasure of working with Hank Azaria on the Broadway production of *The Farnsworth Invention*. Thanks to all for their continued support on this journey. \*peep\*

**DAN DeLANGE** (*Orchestrator*) has orchestrated shows for Paul Williams, Julie Andrews, Jerry Herman (composer of *Hello, Dolly!*; *Mame*; *La Cage aux Folles*), Harvey Schmitt (composer of *The Fantasticks*, *110 in the Shade*), and Peter Link (composer of *The King of Hearts*). He also orchestrated the premiere of *You Never Know* by Charles Strouse (composer of *Annie* and *Bye Bye Birdie*.) Other original orchestrations and arrangements include Enrico Garzilli's *Rage of the Heart* CD, *The Smart Set*, *The Altos*, The Broadway Tenors (with Brent Barrett, Brian D'Arcy James, and Alan Campbell), the Pittsburgh Public Theater, The Epic Brass Symphonic Christmas Series, The American Symphony Orchestra, and music for several commercials and documentaries. Dan has conducted the Broadway national tour of *Chicago* with Brent Barrett and Karen Ziemba, and was music director/conductor for Musical America's national tours of *Crazy For You*, *Beauty and the Beast*, and *Singin' in the Rain*. He is a graduate of Interlochen Arts Academy and Oberlin Conservatory of Music.

**MICHAEL O'FLAHERTY** (*Music Director*) is in his 18<sup>th</sup> season as Goodspeed's Resident Music Director, having conducted 35 musicals at the Opera House and five at The Norma Terris Theatre. His musical arrangement credits include *Gentlemen Prefer Blondes* (Broadway), *Reunion-A Musical Epic in Miniature*, Carol Hall's *To Whom It May Concern*, and *Red, Hot and Blue!* (GOH and Paper Mill Playhouse). He has worked at North Shore Music Theatre, Playwrights Horizons, Ford's Theatre, The Brooklyn Academy of Music, The Kennedy Center, Pittsburgh Public Theatre, The Smithsonian Institution, and was the musical supervisor and Cabaret Director of the Williamstown Theatre Festival for 11 years. Michael conducted the Goodspeed Musicals productions of *By Jeeves* and *Gentlemen Prefer Blondes* on Broadway. His original musical *Genesisus*, for which he wrote the music and lyrics, was recently showcased in NYC.

**CAROL SCHUBERG** (*Associate Choreographer*) recently choreographed The Kennedy Center's Spring Gala opening number starring Chita Rivera. She assisted Ted Pappas with New York City Opera's *The Pajama Game*, Canadian Opera's *Kismet*, and The Pittsburgh Public Theater's *Cabaret*. She choreographed *Two Gentlemen of Verona* for The Shakespeare Theatre of New Jersey and was the assistant choreographer for *The Fantasticks* movie. Carol performed on Broadway in *Meet Me in St. Louis*; and here at the National Tours of *Cats*, *Gigi*, and *Barnum*; and here at Goodspeed in *The Boys From Syracuse* and *Mirette*.

**WILLIAM J. THOMAS** (*Assistant Music Director*) has served as principal conductor for the mainstage productions of *42<sup>nd</sup> Street*, *Li'l Abner*, *Me and My Girl*, *Brigadoon*, and *George M!*. Bill was also associate conductor for *Emmet Otter's Jug-Band Christmas* (2008), *Big River*, *Happy Days*, *1776*, *High Button Shoes*, *Pirates of Penzance*, *Abyssinia*, *Where's Charley?*, *A Tree Grows in Brooklyn*, *Babes in Arms*, and *They All Laughed!*. Norma Terris credits include *Lizzie Borden*, *Tin Pan Alley Rag*, *Dorian*, and *Gotham!*. A composer of several works for chorus and orchestra, Bill is Director of Music Ministries at Christ the King Church in Old Lyme, Conn. Bill is grateful to be celebrating his 16<sup>th</sup> year of being part of the Goodspeed family – many thanks to MOF! Love to Lindsay Ryan and Collin Michael.

**STUART HOWARD, AMY SCHECTER, & PAUL HARDT, CSA** (*Casting*) has cast hundreds of shows over the past 25 years in the USA, Canada, and Great Britain, and has now begun work on Tom Stoppard's *Cyranos* for the National Theatre of France. Among their favorites—Broadway: *August: Osage County*, *Gypsy* (Tyne Daly), *Chicago* (Bebe Neuwirth, Ann Reinking), *Sly Fox* (Richard Dreyfuss), *Fortune's Fool* (Alan Bates, Frank Langella), and the original *La Cage aux Folles*; Off Broadway: *I Love You, You're Perfect, Now Change* and *The Normal Heart*. They have begun work casting *Death and the Maiden* for London's West End and are the casting directors for the new production of *West Side Story* currently on Broadway. They are very pleased to be casting for Goodspeed again this year.

*\*Member of Actors' Equity Association, the Union of Professional Actors and Stage Managers in the United States.*



# WHO'S WHO

**R. GLEN GRUSMARK** (*Production Manager*) is a native of San Diego, CA, and first became active in technical theatre while attending high school in central Vermont. He is a graduate of North Carolina School of the Arts, where he earned a scholarship for artistic excellence and a B.F.A. in technical production. Companies Glen has worked with include Brunswick Music Theatre, Blowing Rock Stage Company, Adirondack Scenic Studios Inc., and North Carolina Dance Theatre. Glen's Goodspeed debut was in 1989 as a carpenter for *Oh, Kay!*. He returned to Goodspeed in 1993 for *On the Town*. He is proud to be a part of the Goodspeed team and is grateful to his mother and father for their continued encouragement and support.

**BRADLEY G. SPACHMAN\*** (*Production Stage Manager*) hails from the Chicago area and is proud to be working with Goodspeed Musicals for his 15<sup>th</sup> season. He is enjoying his third year in the PSM's seat. In East Haddam, some of his favorite Opera House productions include *Singin' in the Rain*, *Big River*, and *George M!*. He also stage managed *O. Henry's Lovers*, *The Baker's Wife*, and *Lizzie Borden* at The Norma Terris Theatre. In addition, he

has enjoyed working for several other regional theaters across the country, including Yale Repertory Theater and Connecticut Repertory Theatre. Outside of Connecticut, he brought Goodspeed's productions of *Pippin* and *The Boy Friend* to cities across North America. In Chicago, he has worked at the Goodman and Lookingglass theaters as well as on the original Chicago tryout of *Smokey Joe's Café*. Brad has never appeared on "Law & Order." Thanks to everybody who made this possible!

**DEREK MICHAEL DIGREGORIO\*** (*Assistant Stage Manager*) is thrilled to be back at Goodspeed this season. Past productions here include *Pippin*, *1776*, *Happy Days* (Norma Terris and Opera House), *Half a Sixpence*, *Big River*, *Emmet Otter's Jug-Band Christmas*, *42<sup>nd</sup> Street*, and *Camelot*. New York credits include *Applause* at City Center Encores!. Other regional credits include *Black Snow*, *Safe in Hell*, and *Comedy on the Bridge/Brundibar* (Yale Repertory Theatre); *Moon Over Buffalo* and *The Odd Couple* (Summer Theatre at Salem). Derek holds a BA from Salem State College and an MFA from Yale School of Drama. He is a proud member of Actors' Equity Association.

## PAST GOODSPEED PRODUCTIONS

2001

Brigadoon  
 \*They All Laughed!  
 A Little Night Music  
 \*+Double Trouble  
 +Great Expectations  
 +Lizzie Borden

2002

Dames at Sea  
 Babes in Arms  
 King of Hearts  
 +Actor, Lawyer, Indian Chief  
 \*+The Road to Hollywood  
 +The Baker's Wife

2003

Me and My Girl  
 Very Good Eddie  
 A Tree Grows in Brooklyn  
 +Stand By Your Man: The Tammy Wynette Story  
 \*+Camille Claudel  
 +O. Henry's Lovers

2004

Call Me Madam  
 Where's Charley?  
 Mack & Mabel  
 ☐+All Shook Up  
 +Princesses

2005

Seven Brides for Seven Brothers  
 The Boy Friend  
 Abyssinia  
 \*+Flight of the Lawnchair Man  
 +Amour  
 +The Girl in the Frame

2006

Lil' Abner  
 Pippin  
 Pirates of Penzance  
 \*+The 60's Project  
 \*+Meet John Doe  
 \*+Caraboo, Princess of Java

2007

Singin' in the Rain  
 High Button Shoes  
 1776  
 +Happy Days

2008

Happy Days  
 Half a Sixpence  
 Big River  
 \*Emmet Otter's Jug-Band Christmas  
 ☐+ 13  
 ☐+The Story of My Life

2009

42<sup>nd</sup> Street  
 Camelot  
 A Funny Thing Happened on the Way to the Forum  
 +Lucky Guy

For a complete list of Goodspeed Musicals' past productions from 1963 to the present, please visit our website at [www.goodspeed.org/shows\\_past.aspx](http://www.goodspeed.org/shows_past.aspx)

☐ Went on to Broadway + Produced at The Norma Terris Theatre \*World Premiere



## ABOUT THE AUTHORS

**LARRY GELBART** (*Book*) wrote the book for the musicals *City of Angels* and *The Conquering Hero*. His other stage credits include *Sly Fox*, *Mastergate*, *Jump*, and *Power Failure*. Among his other credits are "Caesar's Hour," "M\*A\*S\*H," "United States," and "Barbarians at the Gate" for television; in feature films, the screenplays for *The Wrong Box*, *Movie, Movie*, *Oh, God!*, and *Tootsie*.

**BURT SHEVELOVE** (*Book*) (1915-1982) first brought comedy to Broadway in 1948 when he directed and wrote material for the successful revue *Small Wonder*. After winning a Tony with Larry Gelbart for *Forum*, he directed the award-winning productions of *Hallelujah Baby!*, *No, No, Nanette*, and an earlier revival of *Forum* with Phil Silvers. He then adapted and directed Aristophanes' *The Frogs* with music and lyrics by Stephen Sondheim at the Yale University swimming pool. The last Broadway show he directed was *Happy New Year*, a musical he created from Cole Porter songs and Philip Barry's *Holiday*. For the screen he co-authored and co-produced *The Wrong Box*. He contributed prodigiously to television, producing, directing, and writing hundreds of shows starring, among others, Jack Benny, Art Carney, Judy Garland, Frank Sinatra, and Barbra Streisand and winning for them many awards, including an Emmy and a Peabody.

**STEPHEN SONDHEIM** (*Music & Lyrics*) wrote the music and lyrics for *Saturday Night*, *A Funny Thing Happened on the Way to the Forum*, *Anyone Can Whistle*, *Company*, *Follies*, *A Little Night Music*, *The Frogs*, *Pacific Overtures*, *Sweeney Todd*, *Merrily We Roll Along*, *Sunday in the Park With George*, *Into the Woods*, *Assassins*, *Passion and Road Show* as well as lyrics for *West Side Story*, *Gypsy*, *Do I Hear a Waltz?* and additional lyrics for *Candide*. *Side by Side by Sondheim*, *Marry Me a Little*, *You're Gonna Love Tomorrow*, *Putting It Together* and *Moving On* are anthologies of his work as composer and lyricist. For films, he composed the score of *Stavisky*, background music for *Reds* and songs for *Dick Tracy* and the television production "Evening Primrose." He co-authored the film *The Last of Sheila* and the play *Getting Away With Murder*. Mr. Sondheim is on the council of the Dramatists Guild, having served as its president from 1973 to 1981.

### Old Saybrook's Premier Health Club



### FITNESS CLUB

455 Boston Post Road  
at Saybrook Junction  
860.388.1200

### GELSTON HOUSE

FINE DINING + AMERICAN BISTRO



*Fine Dining with unparalleled  
views of the Connecticut River*  
Call now to book your special event

8 Main Street • East Haddam  
860.873.1411  
[www.gelstonhouse.com](http://www.gelstonhouse.com)

*Next to the Goodspeed Opera House*



# The NIA Group is proud to support the **Goodspeed Opera House.**

## **Insurance and Financial Services**

Look to The NIA Group for comprehensive, cost-effective solutions to your insurance and financial planning needs.

## **For Commercial Businesses**

The full range of Property and Casualty insurance, Fidelity and Surety Bonds, Group Life and Health, customized Employee Benefit programs and many other integrated commercial financial services including 401(k) administration. NIA also offers consulting services for Workers' Compensation, Employee Benefits and Risk Management.

## **For Individuals and Their Families**

Automobile, homeowners, umbrella/excess liability, jewelry, furs and fine arts insurance, as well as individual life and health programs. We also offer estate planning including educational funding and long-term care coverage.

**Contact our insurance specialists for a complimentary  
insurance analysis today.**

344 West Main St. • Milford, CT 06460  
(203) 876-6100

CT • NY • NJ • FL

**1.877.964.6300**



The **NIA** Group

INSURANCE & FINANCIAL SERVICES  
One Source. Limitless Solutions.  
For Business. For Home. For Life.

[www.niagroup.com](http://www.niagroup.com)

**LYME ART ASSOCIATION  
AND ART GALLERY, EST. 1914**  
90 Lyme Street, Old Lyme, Connecticut [www.LymeArtAssociation.org](http://www.LymeArtAssociation.org)



*Summer Painting and Sculpture Exhibition*  
June 26 - August 2

*Cityscape Exhibition:*  
*Exploring the Architecture and Life of Town and City*  
August 14 - September 20

*New England Landscape Invitational*  
September 25 - December 5



**WESTBROOK INN**  
*Bed & Breakfast*

*Voted The Most Elegant Inn*

Westbrook, CT  
800-342-3162 • [www.westbrookinn.com](http://www.westbrookinn.com)

*Visit Our Sister Inn*  
[www.bushnellhouse.com](http://www.bushnellhouse.com)  
Westbrook, CT

BUSHNELL  
HOUSE  
HISTORIC INN



Share the magic with a Gift Certificate from Goodspeed!  
Always the right size.  
Always the right color.  
Always Appreciated!

Call or visit our Box Office 860.873.8668  
Purchase on-line anytime at [goodspeed.org](http://goodspeed.org)

Gift Certificates are available in any denomination and may be redeemed for tickets to any of our performances.

*Two Distinctive Settings Where  
Elegance Meets Excellence ...*

**The Riverhouse at Goodspeed Station**



55 Bridge Road Haddam, CT 860.345.4100  
[theriverhouse.com](http://theriverhouse.com)

**The Society Room of Hartford**



31 Pratt Street Hartford, CT 860.524.0796  
[hartfordsocietyroom.com](http://hartfordsocietyroom.com)



Weddings • Private Parties • Business Events • Catering



**(860) 873-3339**

Susan Pagnano, Owner

[www.susans-salon.com](http://www.susans-salon.com)

[susan.susans@sbcglobal.net](mailto:susan.susans@sbcglobal.net)

338 Town Street

East Haddam, CT 06423

**Now Offerings:**

- Full Service Salon
- Manicures and Pedicures
- Reiki & Hypnotherapy
- Lending Library
- Simple Elegance: A formal wear consignment boutique
- Gathering Place featuring
  - HEAL (**H**ealing **E**nergy **A**lliance): A Coop
  - Guest Speakers
  - Monthly Gatherings
  - Various Meetings/Presentations

---

*Nurture Your Inner & Outer Beauty*

Theater Special

All New!!

Hillside

New  
Ownership!



Sweet Shoppe

19 Main Street  
East Haddam

just a 3-minute walk from the Goodspeed!

(860) 873-8474

Coupon

Coupon

Buy 1 adult-size ice cream \* \* Get 1 FREE Scoop

Coldwell Banker Residential Brokerage

LEADING THE  
LUXURY HOME MARKET...



...LOCALLY AND  
AROUND THE WORLD



RESIDENTIAL BROKERAGE

ESSEX  
3 Main Street  
860.767.2636

OLD SAYBROOK  
48 Main Street  
860.388.1100

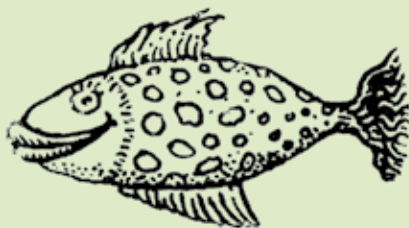
OLD LYME  
86 Halls Road  
860.434.8600

[www.ColdwellBankerMoves.com](http://www.ColdwellBankerMoves.com)



©2009 Coldwell Banker Real Estate LLC. Coldwell Banker is a registered trademark licensed to Coldwell Banker Real Estate LLC. An Equal Opportunity Employer. Equal Housing Opportunity. Owned and operated by NRT LLC. RE0465 05/09

# fall for fish!



## the fish sisters clothing & accessories

You'll love our selection of great fall clothing,  
comfy sweaters, accessories, holiday gifts and more!

2 norwich road, east haddam, ct 06423 860-873-1326

Hours: Tuesday-Sunday 10-5

(Just up the road from the Goodspeed!)

## *Inspired Living ... Exciting Future*



Step into a world of charm and hospitality. The exceptional services of our senior residential community provide you with time for friends, family, and to explore many new opportunities that will inspire your life.

Visit Chester Village West soon to see our expansion and renovations, or view photos at [www.ChesterVillageWestLCS.com](http://www.ChesterVillageWestLCS.com)  
Click *Exciting Future*.



317 West Main Street • Chester, CT 06412  
(860) 526-6800



A Life Care Services Community





# Always a Great Performance

## Big Firm Resources, Local Firm Attention.

You can count on our engagements to be well directed, our approach creative and innovative, and our people professional and polished.

Mahoney  
Sabol & Company, LLP  
CERTIFIED PUBLIC ACCOUNTANTS

AN INTERNATIONAL MEMBER OF  
**BDO**  
SEIDMAN

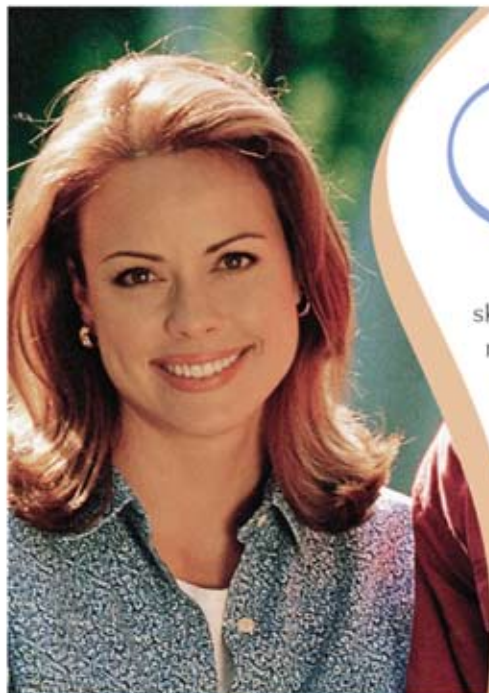
[www.MahoneySabol.com](http://www.MahoneySabol.com)

Middletown  
860.344.8883

Essex  
860.767.9999

Glastonbury  
860.541.2000

Somers  
860.763.1774



SAVE 10% on OBAGI Skin Care Products



skin rejuvenation, botox®, radiesse®  
restalyne®, juvéderm®, perlane®  
face, brow & neck lifts  
facial hair removal  
obagi skin care system

Trust our **Board Certified** facial  
contouring specialists:

Stephen M. Rouse, MD, FACS

Jerilyn S. Allen, MD

William T. Culviner, MD, FACS

Call for a consultation **886.6610 ext.33**  
[www.thecenterforfacialcosmetics.com](http://www.thecenterforfacialcosmetics.com)

Norwich

Colchester

Willimantic



# Chestelm

## Health & Rehabilitation

- Short Term Rehab Care
- 24 Hour Skilled Nursing Care
- Respite Care  
(short term stays to give caregiver a break)
- Outpatient Therapy
- Physical Therapy
- Occupational Therapy
- Speech Therapy
- Adult Day Care (transportation provided)

All Insurances Accepted—  
Medicare, Medicaid, All Private Insurances



CALL FOR INFORMATION **860-873-1455**

534 TOWN STREET • EAST HADDAM, CT



# PASTA VITA



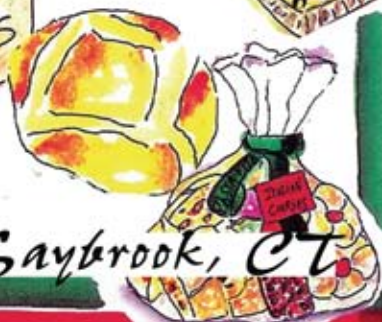
*The Place to Go for Gourmet to Go*  
**HOURS:**

Monday-Friday 8-6

Saturday 8-5:30

860-395-1452

[pastavita.com](http://pastavita.com)



*Old Saybrook, CT*

## WESTERLY, RHODE ISLAND



## WINNAPAUG COTTAGES

[www.winnapaugcottages.com](http://www.winnapaugcottages.com)

AN ACTIVE ADULT COMMUNITY • 55+ MAINTENANCE FREE LIVING

Semi-Custom Detached Homes Starting in the high \$500,000s

One Level Living • Nestled within a 135 acre wooded nature preserve. Minutes to premier beaches, golfing, shopping and dining. Future plans for Independent Living, Assisted Living and recreational amenities.

Toll free 866-208-7558 ext. 1 • Tel. 401-315-2766 ext. 1 • [richard@winnapaugcottages.com](mailto:richard@winnapaugcottages.com)



Live Jazz  
Sunday  
Brunch

Catering for  
all occasions

## Gabrielle's

Pre Theatre Dinner



78 Main Street  
Centerbrook  
CT 06409

860-767-2440  
[www.gabrielles.net](http://www.gabrielles.net)

Give us your ticket stub  
and enjoy a complimentary  
glass of wine with dinner  
or lunch.



ACCLAIMED DINING  
AWARD-WINNING TAP ROOM  
ENTERTAINMENT NIGHTLY  
STUNNING WINE BAR  
CHARMING ACCOMMODATIONS

The **GRISWOLD INN**  
Since 1776

ESSEX, CONNECTICUT  
860.767.1776 • [GRISWOLDINN.COM](http://GRISWOLDINN.COM)

# CONNECTICUT CONCERT

presents Leo Delibes'

## Lakmé

Opera in three Acts

With Sarah Callinan, Meredith Ziegler  
Sandy Densen, and members of the HSO  
Conducted by Doris Lang Kosloff

Saturday October 17 at 8 PM

Hoffman Auditorium, Saint Joseph College, West Hartford

[www.connconcertopera.org](http://www.connconcertopera.org)



Tickets \$38  
Students \$18  
Info: 860.722.2300

CABOTIX  
TICKETS

YOUR COMMUNITY ARTS BOX OFFICE | EXPANDING COMMUNITY ONE TICKET AT A TIME

CABOTIX.COM 800-899-7902



## Christine Rizzo

M.S. L.Ac. C.H.

Acupuncture & Chinese Herbal Medicine

*An holistic approach to optimal wellness and vitality*

Christine maintains a well-rounded, holistic practice offering treatments that pertain to the context of our modern lives.

Her work is characterized by frank, compassionate and informative conversation. Christine offers treatment for body, mind and spirit in a range of therapeutic modalities.

- Acupuncture
- Chinese Herbal Medicine
- Yoga
- Meditation

455 Boston Post Rd. Suite 203A  
Old Saybrook CT 06475  
860-961-5560

[www.connecticut-acupuncture.com](http://www.connecticut-acupuncture.com)



## PROGRAM NOTES

### Comedy tonight!

By Joshua S. Ritter

We can trace the roots of the musical *A Funny Thing Happened on the Way to the Forum* to the esteemed ancient Roman playwright Titus Maccius Plautus, born in Sarsina, Umbria around 254 B.C. It is difficult to determine Plautus' personal contribution, as all of his plays were adaptations of Greek productions that did not survive the ages. There is evidence, however, that he derived his works from plays belonging to the Greek New Comedy style. Plays of this genre portrayed the carefree life of the prosperous youth of Athens and their ceaseless desire for riches to purchase the company of concubines. Greeks considered plays of that style "clean" compared to those from the Old Comedy genre, which were often full of obscene gags and expressions.

Surely, Plautus could never have conceived that three of his plays (*Pseudolus*, *Miles Gloriosus* and *Mostellaria*) would transform into one of the most hilarious and rollicking musicals ever produced. Yet Burt Shevelove and Larry Gelbart did a remarkable job taking Plautus's ancient works and weaving them into what some consider the best book associated with any Stephen Sondheim (Composer and Lyricist) collaboration. More than two thousand years after Plautus, *A Funny Thing Happened on the Way to the Forum* continues to receive widespread acclaim from critics and audiences throughout the world. Stephen Sondheim made his Broadway debut working with Gelbart and Shevelove on the original Broadway production and commented on their work as follows:

"The book is vastly underrated. It's brilliantly constructed. We worked on the show over a period of four years. It took Larry and Burt eleven complete and distinct separate drafts, and everybody thinks that it was whipped up over a weekend because it plays so easily. The plotting is intricate, the dialogue is never anachronistic, and there are only two or three jokes—the rest is comic situation. It's almost like a senior thesis on two thousand years of comedy with an intricate, Swiss watch-like farce plot. The style of the dialogue is very elegant...the phrasing and grace of the dialogue are better than most of the writing of the musical or nonmusical theatre of the last twenty years. It's almost a foolproof piece; it can be done by any high school class or a group of vaudevillians and the play holds up."

*A Funny Thing Happened on the Way to the Forum* melded several traditional comedic styles. Shevelove and Gelbart predominantly combined elements of Roman comic theatre and American burlesque. The show successfully makes use of sexual innuendos, one-liners, and double

takes along with many traditional slapstick situations often found in ancient texts. In the musical, we also find many examples of well-rehearsed comedic action (lazzi) typical to Commedia dell'arte, a comedic device often employed in vaudeville productions. Perhaps as an ode to that style of performance, the creators based the title of the musical on a line that vaudeville comedians commonly used to begin their routine: "A funny thing happened on the way to the theatre..."

Despite the impressive book, the show did poorly during out-of-town tryouts. Initially, Sondheim composed an opening number entitled "Invocation," however, George Abbott (Director) did not think it was "hummable" enough and he urged Sondheim to make a second attempt. In response, Sondheim penned "Love is in the Air," but Sondheim still had reservations about the song and he did not think it properly set the stage for a low comedy. After receiving several nights of unenthusiastic audience reaction to the show while in Washington, Hal Prince (Producer) and Abbott solicited the help of well-respected director and choreographer Jerome Robbins. Robbins advised that the opening number be changed once again. In response, Sondheim composed another song entitled "Comedy Tonight." This opening number had a significant impact and according to Sondheim, "it was cheers and laughter throughout the entire evening at the same lines the audience had received in silence four days earlier."

*A Funny Thing Happened on the Way to the Forum* became a hit several weeks after the Broadway opening on May 8, 1962, receiving six Tony Awards, including Best Musical and Best Book. The original cast included Zero Mostel, Jack Gilford, David Burns, Ruth Kobart, and John Carradine. United Artists produced a film version in 1966 directed by Richard Lester with Zero Mostel reprising the role of Pseudolus. Popularity continued to grow and the show has had multiple revivals for both Broadway and London's West End audiences.

It is our pleasure to bring you a celebrated musical over two thousand years in the making. So please, leave your cares at the door because in the words of Pseudolus, "weighty affairs will just have to wait." A comedy tonight!



Presley Marker, Zero Mostel, and Brian Davies in the original Broadway production of *A Funny Thing Happened on the Way to the Forum*.

A GOODSPEED CHRISTMAS

Jim Henson's  
**EMMET  
LOTTER**

A MUSICAL FOR THE **WHOLE FAMILY**

BEGINS DECEMBER 5

*Back by Popular Demand!*

GOODSPEED OPERA HOUSE  
EAST HADDAM, CONNECTICUT

**860.873.8668**

GOODSPEED.ORG



## HISTORY OF THE GOODSPEED OPERA HOUSE

The Goodspeed Opera House has endured as a majestic presence on the Connecticut River since it was built in 1876 by William H. Goodspeed, a shipping and banking magnate and avid theatre lover. Since that time the Opera House has lived two lives: the first as a bustling center of commerce, housing a theatre, professional offices, steamboat passenger terminal and a general store; and the second, after a period of neglect and deterioration, as a magnificent professional musical theatre fully restored in 1963 to its original splendor.

Goodspeed's history goes back to its opening night on October 24, 1877, when a repertory group presented the comedy *Charles II* and the farces *Box and Cox* and *Turn Him Out*. Featured performers of the day were brought to East Haddam by steamboat, many directly from theatre in New York.

After William Goodspeed's death, the theatre was eventually sold and used as a storage depot for the State Highway Department. The building was marked for demolition in 1958, but local preservationists became interested and in 1959 The Goodspeed Opera House Foundation was organized to restore and reactivate the theatre. With the cooperation of the State of Connecticut

and the support of donor-members, the Goodspeed Opera House was restored and rededicated on June 18, 1963, with the opening of the musical *Oh Lady! Lady!!*



Commemorate a friend or loved one's special birthday, anniversary, promotion, or any other important occasion!

## Dedicate a Performance at the Goodspeed Opera House

Please contact Gloria Gorton at 860.873.8664, ext. 366,  
or [ggorton@goodspeed.org](mailto:ggorton@goodspeed.org) for more information.





# ABOUT GOODSPEED MUSICALS

Goodspeed Musicals was first formed as The Goodspeed Opera House Foundation in 1959 to restore the 19<sup>th</sup> century Goodspeed Opera House as a professional theatre. Under the direction of Michael P. Price since 1968, Goodspeed has achieved acclaim as the home of musical theatre. Mixing classics by the Gershwins, Cole Porter and Jerome Kern with the very best of this country's newest musicals, such as *Annie*, *Man of La Mancha* and *Shenandoah*, Goodspeed pioneered the practice of rethinking, restoring and revitalizing America's musical theatre heritage.



The cast of *Camelot*, 2009  
Photo by Diane Sobolewski

## Goodspeed Opera House

Dedicated to the preservation and advancement of musical theatre, Goodspeed produces three musicals April through December on its mainstage in East Haddam. Nineteen Goodspeed productions have gone on to Broadway, receiving more than a dozen Tony Awards. Goodspeed itself has been awarded two Special Tony Awards, one in 1980 for outstanding contributions to the American musical and a second in 1995 for distinguished achievement for a regional theatre.

Located in rural East Haddam on the Connecticut River, the historic Victorian-style Opera House takes musicals from the past and brings them to life for today's audiences.

## New Musicals at The Norma Terris Theatre

Goodspeed is at the forefront of shaping the future of musical theatre. At The Norma Terris Theatre, located in nearby Chester, Goodspeed develops new musicals and nurtures emerging artists. Goodspeed has launched over 50 musicals into the theatre world at The Norma Terris Theatre, giving composers and authors the opportunity to develop their material through actual production. Audience response is a vital part of this theatre. Regular input is actively sought through "Talkback" discussions with the creative staff, giving audiences the opportunity to play a part in creating a new musical.

## The Scherer Library of Musical Theatre

The Scherer Library of Musical Theatre is integral in perpetuating our national musical heritage. The Library preserves scores, sheet music, scripts, original cast recordings, playbills and theatre memorabilia. In addition to making this collection available for study and research, the library provides the Goodspeed creative staff with original source material to assist in the faithful re-creation of musicals.

## The Max Showalter Center for Education in the Musical Theater

In 2002, Goodspeed Musicals established The Max Showalter Center for Education in the Musical Theater. The Center encourages and nurtures musical theatre artists and students by providing a unique and comprehensive array of training and educational programs to serve both the national and local academic communities. As a part of that mission, the Center conducts the annual Goodspeed Musical Theatre Institute in collaboration with New York University's Tisch School of the Arts and The Hartt School at the University of Hartford. In addition, it offers education pages on Goodspeed's website, allowing visitors to further participate in and appreciate the rich and vibrant world of musical theatre. For more information, please call Education Director Joshua S. Ritter at 860.873.8664, ext. 745.



# WILLIAM H. GOODSPEED LEGACY SOCIETY

## *Honoring Those Who Have Made a Commitment to Provide for the Future of Goodspeed Musicals*

By remembering Goodspeed through a planned gift, you can ensure that your legacy of support, so important to our production of highest quality musical theatre, continues for future generations. The William H. Goodspeed Society was created to recognize those who have included a future bequest to Goodspeed in their wills or estate plans.

Anonymous (6)  
Edward and Ruth Cape  
Michael Chaiklin  
Richard Goodman  
Norwick R. G. and Elizabeth Jane Goodspeed  
Martha D. "Pepper" Hitchcock  
Mr. and Mrs. Robert P. Jones

John Kartovsky  
Ruth Katz  
Dorothy Liepert  
Andrew C. McKirdy  
Leslie and Lynne Nathan  
The Maryann and Jane E. Ondovcsik Fund for the Preservation of the Victorian Goodspeed Opera House

Peter and Janet Otto  
Michael and Jo-Ann Price  
Dr. Anne L. Rothstein and Ms. Jane Hellman  
Richard and Mary Schneller  
Mark and Roberta Velez

### **Goodspeed Musicals Funds and Endowments**

The funds and endowments listed below were established during lifetime, by bequest, or in memoriam with an outright gift to Goodspeed Musicals.

- The Frederick A. and Justine Millspaugh Catlin Family Fund
- The Arthur and Elizabeth Godbout Fund for the Support of the Music Department
- The George S. and Charmian A. Goodspeed Memorial Fund
- The A. Nicholas Groth, Ph.D. Charitable Gift Annuity\*
- The Richard G. and Elizabeth F. Kehoe Charitable Gift Annuity
- The Charles R. Lindberg Family Fund
- The Salvatore Marzano, Jr. Memorial Student Scholarship Fund
- The Elaine McKirdy Intern/Apprentice Endowment
- The Charlotte and Gerald Sandler Educational Endowment
- The Scherer Library of Musical Theatre Fund
- The Max Showalter Center for Education in the Musical Theater
- The Ashton M. Tenney, Jr. Memorial Annuity Fund\*

*The donors receive an income stream during their lives and a named fund or endowment will be created when the annuity reverts to Goodspeed Musicals. For further information on how you can ensure your legacy of support with a Planned Gift to Goodspeed Musicals, please contact Gloria Gorton, Director of Major Gifts, PO Box A, East Haddam, CT 06423, 860.873.8664, ext. 366 or e-mail [gloria.gorton@goodspeed.org](mailto:gloria.gorton@goodspeed.org).*

### **Special Gifts**

Goodspeed Musicals is grateful to those who have made a special gift during the 2009 season. They include: Suzanne and Donald Joffray  
Benjamin B. Liveten Charitable Grand Nephew Trust  
Carol Sirof

### **Memorial Gifts**

In Memory of Leonard Blake, given by The Goodspeed Guild and Nancy L. Planeta  
In Memory of Marie Dombroski, given by Merle and Ron Bernstein

Goodspeed fondly remembers those who left a bequest or in whose honor a memorial fund was established. Their love of musical theatre and our institution is an example to us all.

- The Milon Barnes Memorial Fund
- Leonard N. Blake
- Albert D. Firestone
- Henry Sage Goodwin Memorial Fund
- The Edith O. Haynes Trust
- Martha C. Hinkel
- Thomas W. Holton Memorial Fund
- The Adrienne I. Koch Revocable Trust
- William J. Kochen Memorial Fund
- The Edward Mills Memorial Fund
- Edith L. Nyman
- Rochelle Richilson
- Barbara V. Ross
- Bertha L. Rottmann
- Martha Shattuck





# THE GOODSPEED OPERA HOUSE FOUNDATION

*The Goodspeed Opera House Foundation, chartered by the State of Connecticut as a charitable, educational, non-profit organization, is charged with the responsibility of maintaining the Goodspeed Opera House both as a historic landmark and as a living theatre. The objective of the Foundation is the establishment and development of a nationally recognized regional theatre of which its members and supporters can be justly proud.*

## 2009 BOARD OF TRUSTEES

Francis G. Adams, Jr.  
John Barlow  
Myron R. Bernstein\*  
David W. Bogan  
Theodore S. Chapin  
Kay Knight Clarke  
Alvin Deutsch  
Christopher J. Dodd  
David F. Frankel  
Robert B. Friedman  
Norwick R. G. Goodspeed\*\*  
Helen Gray  
John H. Hamby  
Jeffrey S. Hoffman  
Lynde S. Karin  
John S. Kartovsky\*\*  
Mary Ellen Klinck  
Mark Masselli  
F. Patrick McFadden, Jr.  
Lawrence McHugh  
Robert Roy Metz\*  
Robert F. Neal  
Eric D. Ort  
Muriel S. Paris  
Michael P. Price  
Susan Scherer  
Richard F. Schneller\*\*  
H. William Shure  
Viola Tagliatela  
DeRoy C. Thomas  
Mark Wainger  
John F. Wolter  
Dona D. Young

\**Emeritus Trustee*

\*\**Honorary Trustee*

## OFFICERS

M. Jodi Rell, *Ex Officio*  
*Honorary Chairman*  
DeRoy C. Thomas, *Chairman of the Board*  
Francis G. Adams, Jr., *President*  
Jeffrey S. Hoffman, *Vice President*  
Dona D. Young, *Vice President*  
Eric D. Ort, *Secretary*  
Mark Masselli, *Treasurer*  
McLaughlin & Stern, *General Counsel*

## PAST PRESIDENTS

Marian D. Terry  
Muriel W. Selden +  
Bernard Knollenberg  
Noel M. Davis +  
Hal James  
Beatrice H. Rosenthal+  
Alan C. Davis  
Noel B. Gerson  
John H. Hamby +  
Norwick R. G. Goodspeed +  
Richard F. Schneller +  
Robert F. Neal +  
DeRoy C. Thomas  
*+ also served as Chairman of the Board*

## GOODSPEED COUNCIL

Carol Adams Dahlke  
Rod Duxbury  
Ilia M. O'Hearn  
Leonard H. Suzio  
Marty Travis  
William F. Turner

## THE SCHERER LIBRARY OF MUSICAL THEATRE AT GOODSPEED

The Scherer Library of Musical Theatre at Goodspeed perpetuates our national musical heritage through the careful preservation of vital performance materials: scores, sheet music, scripts, original cast recordings, playbills, and theatre memorabilia. Its efforts are enhanced by the support of the Library Advisory Board. The Library owes its existence to the generosity of those who have contributed their personal collections and it gratefully accepts materials related to musical theatre.

## 2009 LIBRARY ADVISORY BOARD

Ken Bloom  
Theodore S. Chapin  
Alvin Deutsch  
Brian Drutman  
David Hummel  
Michael A. Kerker  
Robert Kimball  
Bruce Pomohac  
Bill Rosenfield  
Henry S. Scherer, Jr.  
Steven Suskin

## THE MAX SHOWALTER CENTER FOR EDUCATION IN THE MUSICAL THEATER ADVISORY BOARD

Gordon Greenberg  
Robert R. Metz  
Jane Percy  
Peter Walker  
Nancy Wolf



# GOODSPEED MEMBERSHIP

Did you know that your ticket price covers less than 60% of the actual cost of our performances? You might think of it as getting everything after intermission **FOR FREE**. More accurately-everything in the second half of the production is made possible by the generosity of Goodspeed contributors.

**THANK YOU**, Goodspeed Members! Goodspeed is over 7,000 members strong – for a complete listing, please visit our website at [www.goodspeed.org](http://www.goodspeed.org).

*As of August 17, 2009*

## MARQUEE PARTNERS

### FOUNDING PARTNER (\$25,000+)

Lucille and Dave Viola, Sr.

### INVESTING PARTNERS (\$10,000+)

- \*Mr. and Mrs. Francis G. Adams, Jr.
- \*Richard T. Cersosimo and Valerie J. Koif
- Mr. and Mrs. Jerry K. Day
- Steve and Sharon Finger
- Mr. and Mrs. Gerald Lazar
- Michael and Jo-Ann Price
- Mr. and Mrs. DeRoy C. Thomas
- Dona and Roland Young

### EXECUTIVE PRODUCING PARTNERS (\$7,500+)

Robert A. and Nancy J. Franco  
Suzanne and Donald Joffray

### ARTISTIC AND TECHNICAL PRODUCING PARTNERS (\$5,000+)

Dr. and Mrs. J. R. Buchanan  
Alice Dadourian  
Mrs. Harry J. Gray  
Mr. and Mrs. William Haber  
The Kitchings Family  
Catherine Ladnier and J.M. Robinson  
Ruth Lord

Anthony and Chelsea Michaud

- \*Regina and Robert F. Neal
- Mrs. Peter E. Paris
- Saul and Hila Rosen
- Dr. Anne L. Rothstein and  
Ms. Jane Hellman
- Ted and Vada Stanley
- Mr. and Mrs. Angelo Tomasso, Jr.
- Leanne F. Trout

\*Mark Wainger and Charles Taylor

### ASSOCIATE PRODUCING PARTNERS (\$2,500+)

Sandra Anagnostakis  
Charles Beach Barlow  
John Barlow and Scott Rudin  
Frank and Amy Campbell  
Sally and Ted Carrier  
The Christine E. Moser Foundation  
\*Kay Knight Clarke and Logan Clarke  
Mr. and Mrs. Walter W. Congdon  
Mr. and Mrs. Robert F. Coviello  
Alvin Deutsch  
Bill and Denice Feeley  
Sandy and Bob Friedman  
Reginald H. Fullerton, Jr.  
Scott D. Furman and David L. Szankovics  
William J. Ginnetti, Sr.  
The Harry E. Goldfarb  
Family Foundation  
Mr. and Mrs. Ronald Goodspeed

Mr. and Mrs. Norwick R. G. Goodspeed  
John and Joanna Hamby  
Ms. Heather Henson  
Nancy and Jeffrey Hoffman  
Lynde S. and Michael Karin  
Mr. and Mrs. Robert H. Lewis  
Jack Light  
Mr. and Mrs. Charles R. Lindberg  
Thomas Fynan and William Lourel  
Timothy and Sharon Lynch  
Mark Masselli and Jennifer Alexander  
Mr. and Mrs. George J. Michel, Jr.  
\*Mary and Elliott Miller  
Mr. and Mrs. John J. Nyikos  
Eric Ort and Duff Ashmead  
Donald G. Reed  
Lt. Col. Robert A. Ridlehoover  
Peter and Betsy Russell  
Dr. and Mrs. Gerald Sandler  
Mr. and Mrs. Henry S. Scherer, Jr.  
Donna and Bill Stamm  
Sorenson-Pearson Family Foundation  
Mrs. Ashton M. Tenney, Jr.  
Carl and Jessica Thompson  
Thomas F. Tyrseck and  
Marie V. Morosky

Fran and Phil Feltman  
Muriel and Karl Fleischmann  
Raymond J. Fontana  
Samuel S. Fuller  
Zelda and Charles D. Gersten  
Betty Gilman  
Lea and Dick Goodman  
Roger C. Goodspeed  
Gordon D. Gross  
Hattie and Terry Guin-Kittner  
Ron and Nina Harris  
Al and Judy Heinke  
The Hermann Family  
Charitable Foundation  
Mrs. Harold William Higgins  
Attorney Harvey Hoberman and  
Penny Parker  
Betty Ruth and Milton Hollander  
Mr. and Mrs. Arthur Alfred Hulse  
Mr. Penfield Jarvis

\*Mr. Edward T. Kask  
Susan and Peter Kelly  
Ted and Kiki Kennedy  
Mr. and Mrs. Simon Konover  
\*Nicholas T. Lemesh  
Robin Lewis and Robert Rich  
Warner and Deanna Libby  
Mr. and Mrs. F. P. McFadden, Jr.  
Larry and Patty McHugh  
Robert Roy and Susan Metz  
Service Station Equipment Inc.  
Denis F. Mullane  
Thomas and Karen Murphy  
Peter Johnson Musto  
Mr. and Mrs. Bruce M. Newman  
Mr. and Mrs. David Ogden  
Mr. and Mrs. James Olson and Family

\*Jane E. Ondovcsik  
Larry and Martha Parks  
Raymond and Marlene Piche  
Sam and Phyllis Pierson  
Willard and Sigita Pinney  
Philip W. Porter, Jr.  
Racine Company  
Chuck and Dianne Ramsey  
J. Rosenkrantz and M. Cohen  
\*Diane M. Rottmann  
Dr. and Mrs. Jaime Santamaria  
Mrs. Benjamin Schilberg  
Richard and Mary Schneller  
\*Mr. and Mrs. William B. Seaver  
Fred and Carol Seeman  
Mr. and Mrs. Allyn Seymour, Sr.  
Mable and Richard Seymour  
Mr. and Mrs. Martin C. Shapiro  
Mr. and Mrs. H. William Shure  
Jerome and Marian Silverstein  
Richard Stapleton  
Henry Skip Steiner  
Beatrice Stokes

## THE PRODUCER'S CIRCLE

### PRODUCER (\$1,000+)

Anonymous (1)  
Mr. Daniel Adams  
General and Mrs. Elliott B. Alter  
\*Dolores L. Andrew  
Mr. and Mrs. Joseph E. Arborio  
Greg and Joyce Barabas  
Mr. and Mrs. Barton M. Bauers, Jr.  
Maxwell and Sally Belding  
Mr. and Mrs. Bruce L. Blakeslee  
David W. Bogan and Heather Hunt  
Michael Bragulla  
In Memory of Kay McGrath  
Florence L. Carples  
\*Mr. and Mrs. Terry W. Chabot  
Creative Transportation  
The Cheryl Chase and Stuart Bear  
Family Foundation  
Mr. and Mrs. Gordon U. Cobleigh  
Maury and Sonia Cohn Foundation  
Terri and Don Coustan  
Mrs. J. Noyes Cray  
Mr. and Mrs. Donald Daren  
Debra and Steven Daren  
Mr. and Mrs. David W. Dangremond  
Bill and Doris Davis  
William and Christine Donohue  
Mrs. Nathan L. Dubin  
Mr. and Mrs. Bruce M. Dutch  
Mr. and Mrs. Robert K. Erf  
Mr. and Mrs. J. Richard Farley



# GOODSPEED MEMBERSHIP

Mr. and Mrs. William J. Stolba, II  
Mr. and Mrs. Emil Tilonia  
Donald and Sharyn Timmerman  
Michael and Florence Timura  
Gertrude Tyrol  
Arthur E. Webster, Esq.  
Mr. and Mrs. Samuel J. Weinhoff  
RADM. Louise C. Wilmot USN (Ret.)  
and James E. Wilmot  
Ms. Nicole L. Elkon and  
Mr. Neal S. Wolin  
Jef and Kate Wolter  
Ferne and Peter Youmans  
Mrs. Valentine Zahn

## ASSOCIATE PRODUCERS (\$500+)

Anonymous (4)  
Sandy and Dave Adams  
Mrs. Ronald F. Agostini  
Fred and Roberta Alardyce  
Robert C. Alwine  
Billie and Peter Anker  
\*Ed and Eileen Annino  
Mr. and Mrs. John C. Arena  
Mary B. Arnstein  
Bette and Bruce Avery  
Mrs. Jack Axelrod  
Sherri and Scott Baggett  
\*Mr. and Mrs. Ray Barker  
Cynthia Bates and Jonathan Russell  
Mr. and Mrs. Edwin L. Baum  
Denise Bernardo and Edwin Muentes  
Merle and Ron Bernstein  
Bishopsgate Inn  
Mr. and Mrs. Curtis L. Blake  
Alan Blanchard  
\*Dr. and Mrs. Richard F. Bloom  
\*Mr. and Mrs. Gustaf R. Bodin  
Jan and Ron Bogdan  
Kenneth and Judith Boudreau  
Stephanie M. Branta  
Nadine and Robert Britton, III  
Helen Babcock and Tom Buttacavoli  
S. E. Canaday, Jr.  
Paul C. and Patricia B. Carlson  
\*Michael and Barbara Cerrina  
Mr. Michael Chapin  
Colchester Mill Fabric  
Mr. and Mrs. Richard Chiaramonte  
Anne and Gabe Choquette  
Barbara L. Clark  
Scott and Jo Cleary  
Mr. and Mrs. Charles A. Clinton  
Marilyn and Ted Colvin  
Lynette and Linc Cornell  
Donald and Sandra Costantino  
Omar Coffee Company  
Michael and Peg Curtis  
Mr. Daniel Hechtman and  
Ms. Danielle Danese  
Joel N. and Ruth Ann C. Davis  
Dr. and Mrs. Arthur C. DeGraff, Jr.  
\*Chuck Dell  
Brian and Linda Dewhirst  
\*Roy and Betsy Dickinson  
Betty Dove  
Herbert Drower  
Mary Jane Dunn

Jean W. Earle  
The Eastland Family  
Dr. and Mrs. John R. Eddy  
Gene and Vera Ehnen  
Jim and Judi Elder  
Mr. and Mrs. Michael Elgee  
\*Frederick Elia  
Gloria and Martin Feibish  
Dr. and Mrs. Brendan M. Fox  
Dr. James Frost  
Avery and John Funkhouser  
Barbara A. Gabianelli  
Rona Gelber  
Judi and Albert Glassenberg  
Gloria J. Gorton  
\*Mr. and Mrs. Mark B. Gossner  
\*David and Patricia Hadlow  
Newell and Betty Hale Fund of  
Greater Worcester  
Mr. and Mrs. Burt Hallisey  
\*Richard B. Hanrahan  
Al and Betsey Harris  
Hastings House Antiques  
Brian and Karen Henderson  
Sue Hessel and Karen Dahle  
William Hewitson  
\*Claudette, Ned, Maeve and Ciara  
Prudence Hoffman  
Diana and Paul Hughes  
James and Isabel Jackson  
Barbara and Ray Jacobsen  
Mr. and Mrs. Scott Jezek  
Lisa B. Walker & Robert Kaplan  
John S. Kartovsky  
Mr. and Mrs. Douglas E. Kehl  
Sallie L. Kemp  
Steven and Deborah Kleinman  
Ronald Klimas  
Mary Ellen Klinck  
\*Kenneth Koe  
Hans and Christina Koehl  
Abbey and Stephen Kreinik  
Darlene F. Krenz  
Frank and Elisabeth Landrey  
Dr. and Mrs. Robert E. Lebson  
Mr. and Mrs. David A. Lentini  
Roger and Carla Levien  
Barbara and Ira A. Levin  
Mr. and Mrs. Brian Liistro  
Jean and John Linderman  
Dr. and Mrs. Koen Loeven  
Peter and Rosemary Lombardo  
Mary Kay Long and Dennis F. Unites  
Phyllis and Ray Losnes  
Mr. and Mrs. Arthur Lovell, Jr.  
Joseph G. Lynch  
Mr. and Mrs. Robert J. Lyons  
Mr. and Mrs. William C. Lyons  
Douglas R. Magee, Jr.  
Dr. Clare Manzi and  
Dr. Vincent Williams  
Mr. and Mrs. Thomas Marra  
Robert K. Mason  
Ken Maxwell and Arlene Tunney  
\*Joseph and Nancy Mazza  
Jay McAnally  
McCarthy & Sons

John and Amy McCauley  
Andrew and Bonnie Lee McKirdy  
Mrs. John F. McManus, III  
Mr. and Mrs. James J. Melo  
Tom and Mary Mielt  
Sandra Milles  
Francis J. Morison  
Kevin Murphy  
Dr. and Mrs. Thomas J. Murphy  
Robert and Carolyn Nelson  
Naomi and Jerry Neuwirth, M.D.  
David I. Newton  
Allen J. Novakouski and  
Daniel J. Hutton  
Brian O'Brien  
Mr. and Mrs. G. Robert O'Brien  
Mr. David Ogden  
William Orsini and Walter Smith  
\*Loren and Elaine Otter  
Dr. and Mrs. John Paardenkooper  
\*Peter and Candace Pappas  
R.A. Parady & Sons, Inc.  
\*Ron and Carla Pariser  
Lyn Mathews Perrin  
\*Mr. Rolf Peterson  
Rod and Lucy Petrey  
Dag and Nancy Pfeiffer  
Beverly and Brian Platner  
C. L. and Rosina Raiteri  
Thomas Redmerski  
Mitchell and Lorraine Rochefort  
Eric and Sandra Rustici  
John and Fran Sadek  
Marilyn Safenowitz  
Jane and Morley Safer  
Patricia and Andrew Salner  
Mr. and Mrs. Jacob Salzman  
Dorothy and Peter Samuels  
Susan and Russell Santora  
Mary and Joe Sargent  
Dr. and Mrs. Lee Sataline  
Linda R. Savitsky and Alvin G. Wolfgram  
Dr. and Mrs. Stephen Scarangella  
Linda and Philip Scheffer  
Daniel W. and Sandra B. Schneider  
Dr. and Mrs. John Schowalter  
Jack and Bonnie Scott  
Steven R. Senter  
Fred and Barbara Sette  
\*Karen and Allyn Seymour  
Richard and Barbara Shaffer  
\*Thomas J. Shakun  
Mr. and Mrs. Edward J. Sharr, Sr.  
Mr. and Mrs. Thomas Shea  
\*Katy and Frank Sherer  
Mr. and Mrs. Anthony Shetensky, Jr.  
Louis and Tracy Shoor  
Stuart and Arline Small  
Lon and Susan Smith  
Sara Sparrow  
Rolf and Sioux Stacy-Olson  
\*Richard D. Stapleton  
Mr. and Mrs. Chris M. Steele  
Josephine Merck and  
James Stevenson  
Suzio/York Hill  
Mr. and Mrs. Edward C. Swift



# GOODSPEED MEMBERSHIP

Dr. and Mrs. Russell Sylvester  
Jennifer Shinn and Russell Tait  
Stewart Taubkin  
Judy B. Taylor

\*Joe and Eunice Thomas

\*Kathleen Thompson  
David and Laurie Title

\*Sheila L. Tomlinson

\*Mr. and Mrs. Paul Tracey  
Edwin B. Tuthill, Jr.  
Mrs. Arthur D. Van Winkle  
Jean B. Vogel

Mr. and Mrs. Russell Waldo  
Judith and Steven Warner  
Patti and Howard Weiner  
Leslie and Richard Weinstein  
Victoria and William Winterer  
Haggett, Longobardi LLC  
Symond and Martha Yavener

\*Mr. and Mrs. Robert Yudkin

\*Eleanor E. Zajac  
Dr. and Mrs. Robert Zavod  
Nancy and George Zitnay

\*Mr. and Mrs. Peter R. Zucco

## DIRECTOR'S SOCIETY (\$250+)

Anonymous (7)

Mrs. Paul D. Abercrombie  
Richard and Merrill Adams

Seth and Katey Adams

Taggart Adams

William D. Addison, Jr.

Barbara Agar

Dr. and Mrs. Sultan Ahamed

Howard J. Aibel

Rose M. Allen

Mary Allingham

Karen and Norman Alterman

Phyllis and Vincent Amato

Ray Gaulke & Sydney Anderson

Dr. and Mrs. C. Wallace Andrias

Paul and Christine Antaya

Charles J. Anthony

Martha Atkinson and Deborah Lyon

Mr. and Mrs. William G. Atkinson

Mr. and Mrs. Hillel J. Auerbach

Robert Babcock

John, Nancy and Nikki Baccaro

\*Paul, Cinda, Jay and Sam Barbuto

Michael and Shelley Barker

\*Mr. and Mrs. David N. Barry

Mr. and Mrs. Edward D. Barry

Myrna Baskin

Michele and Sherman Baumann

Cynthia and Allen Beavers

Deborah Beebe

Debra and John Bekish

David A. and Alice C. Belden

Mrs. Ellen W. Bell

Gary and Ruth Benanav

G. Spencer Berger

Randee and Martin Berliner

Lynette Bester and Family

Donald Bidwell

Joseph and Kerry Biega

Barbara and Barton Bienenstock

Mr. and Mrs. J.P. Bischoff

\*James Blackburn

G. Howard Blythe

Wallis and Laurie Boyd

Don and Susan Boyle

The Bradford Family

Attorney and Mrs. Peter F. Brady

\*Liliane T. Braman

\*Gordon W. Braudaway

William and MaryEllen Bridges

BrandTech Scientific, Inc.

Joyce and Harold Buckingham

Eugene and Ann Buckley

Eileen Buckley

Mr. and Mrs. John F. Budd, Jr.

\*Carla and Richard Bue

Frank and Shari Bugaj

Peter S. and Sally R. Burgess

Mr. and Ms. Robert Butkus

Edward Cape

Anne and Jim Carroll

Robert and Carole Carter

\*Leon and Marilyn Case

George and Frances Caspar

Greg and Melinda Castanza

Michael Chaiklin

Theodore S. Chapin

Ms. Karen Chase and

Dr. Charlie Dickson

Richard O. Cheney

John and Rosanna Chidsey

Kyung H. Chung, M.D.

Jack and Bertie Chung

Robert E. Cienian

\*Janet and Tim Clark

Peter and Marcelyn Clarke

Marshall Cohn

Philip and Clio Coles

Andrew and Elizabeth Comcovich

Dr. and Mrs. Michael M. Conroy

Gloria K. Corbit

Gary and Carol Coriiss  
Cornerstone Construction Services, Inc.

Cove Navigation, LLC

Holly and Steven Craig

Dr. Amy Crockett

Mr. and Mrs. Samuel D. Crum, Jr.

Joan K. Curry

Henry F. Curtis

Michael and Gail Cutler

Eric and Patricia Daniels

Eric Dawicki

Stanley K. Dean

Deborah Dembo

\*Mr. Eugene Dessureau

Sherrie Deveau

\*Linda W. DeYoung

Arthur and Edythe Director

Mrs. Martha Dobruck

Mr. Jonathan Dodd

Mr. Steven Dodd

John and Pat Doolittle

\*Dr. and Mrs. John E. Dreslin

David and Deborah Dressler

Herbert Duey

Rose and Louis Dunlap

Mary Jane Dunn

\*Mr. and Mrs. David R. Edwards

Jim and Judi Elder

J. Andrew Engelhardt

Mrs. Carol Engle

Eloise Epstein

Mrs. Florence R. Ergin

Jon and Anna-Lena Estes

Mr. David Fallon

Jackie and Bill Falman

Michael F. Farina, Jr.

Rhoda and Arthur W. Feinstein

Ann Field

Earle Finch

EMCOR Services -

New England Mechanical

Dr. and Mrs. William Fitzgerald

David and Judy Fleischer

Lynne and Richard Fletcher

Brenda and Chad Floyd

Frances Forde

\*Janet M. Forgey

Mr. and Mrs. Raymond Fornwald

The Honorable and Mrs. Frederick A.

Freedman

Eula and Glenn Fresch

Frank Frey

Donna and Ed Fuhrman

Ms. Mary E. Gabriele

Dr. and Mrs. Gregory J. Gallivan

Cleveland W. Gardner

The Reverend and Mrs. Ronald S. Gauss

Carol and David Geyer

Rick Gibbons

Mario S. Gioco, CPA

Wil and Mary Ellen Gladue

Elizabeth D. Godbout

Mr. and Mrs. Samuel Golding

\*Dr. and Mrs. Donald Gonci

Dr. and Mrs. Lawrence Goodman

Francis M. Gordon

Mr. and Mrs. Malcolm Graff

Ray and Judy Grasso

Bill Gratz and Jay Bruno

Carole and Harold Greenbaum

\*Mr. and Mrs. Michael Groenhout

\*Mr. and Mrs. Roger Gross

Peter and Barbara Guerra

Mr. and Mrs. Robert P. Haff

Mr. Stephen Hahn

Mark and Julie Haight

Dr. and Mrs. John J. Haksteen

Bill and Paula Harkins

Mr. and Mrs. Arthur H. Harris, Jr.

Dwight and Pat Harris

Sue Hart

Michael Hassam

Pat and John Hechavarria

\*Mr. and Mrs. Donald P. Henry

Sandra S. Hewitt

T. Donald and Helene Hirschfeld

Betsy Sage and Stephen Hitriz

George and Joan Hogan

Mr. and Mrs. Robin Honiss

Paul Horoschak

Ms. Deborah Horton

Barbara and John S. Hubbard

Alan and Ann Hughes

Mr. and Mrs. Leslie A. Hyatt



# GOODSPEED MEMBERSHIP

Daryl and David Ifkovic  
Lou Blumenfeld and  
Jacqueline Isaacson  
Amy Jacques-Purdy and Brian W. Purdy  
Mrs. Curtiss Johnson, Jr.  
Hugh Jones  
Stephen R. Jones  
Irene Junge  
John and Betty Kelly  
Nancy Mattoon Kline  
Michael J. Klingensmith and  
Ruth A. Shields  
Dr. and Mrs. Kort C. Knudson  
George S. Koczon  
Mrs. Walter O. R. Korder  
Jerry and Bunni Korman  
Dr. and Mrs. Steven Korn  
The Kozliks  
Max and Ruth Kuziak  
Sheila Laing  
Rev. Roger J. Lamoureux  
Fred and Jo Langhoff  
R.N. LaRosa Corp.  
\*Ken and Barbara Larson and  
Thelma and June  
Lance LaShelle  
\*Mary and George Laursen  
Dr. and Mrs. Stanley Lavietes  
Harmon and Elizabeth Leete  
Jane Leibowitz  
Mr. and Mrs. Terrence T. Lescoe  
Coleman and Judie Levy  
Mr. and Mrs. James Lianos  
Lorraine Lieberman  
Mr. and Mrs. Louis Loffredo  
\*Roberta and Joseph Lombardino  
\*Mr. and Mrs. William Longa  
Karin and Thomas Longo  
Ian and Sylvia Lucas  
Lou Ludgin  
Mr. and Mrs. Ian G. MacDonald  
\*Emanuel and Irene Makiaris  
Mr. and Mrs. James M. Makuch  
William Manafort  
Anita and William Mancoll  
Mr. and Mrs. John F. Mangold  
Arthur and Elizabeth Maniatty  
Attorneys Linda Mariani and  
David Neusner  
John T. Martick  
Dr. and Mrs. Keith Martin  
Mr. and Mrs. Jack Matava and Family  
Mr. and Mrs. Frederick Maynard, Jr.  
Donna McArdle  
Kevin and Jean McCarthy  
Paul and Jan-Gee McCollam  
Virginia S. McCurdy  
Phyllis McDowell  
Mr. and Mrs. Victor McGrady  
Jim and McIntyre  
Mr. and Mrs. John McParland  
Jacqueline and James McWilliams  
\*Mr. and Mrs. Ronald B. Meehan  
Mary Miko and Joseph Migliaro  
Mr. and Mrs. George B. Miles

\*Alf Millard and Barbara Butler  
John and Patricia Miller  
Margie and Lance Minor  
Meg and Scott Mocoski  
Nancy O. Moreland  
Thomas Moriarty  
\*Mr. and Mrs. Floyd A. Morley  
Jan and Harold Moskowitz  
Mr. and Mrs. Kenneth A. Munson  
Mr. and Mrs. Stephen J. Negri  
Andrew and Jodie Nevas  
Gail and Anthony Newman  
Matthew Newton Family  
Dr. Debra B. Nevas and  
Dr. Jonathan T. Abrams  
William Nivison  
Mike and Gwen O'Connell  
Daniel Offutt  
\*Arlene Oleksy  
Cecil J. Olmstead  
Alan and Joyce Ortnier  
Rea and Mary Ann Outman  
Charles H. Owens  
Mr. and Mrs. Paul Palmer  
Carl and Alvyra Pavano  
\*William and Andrea Phinney  
Patrick L. Pinnell  
Chris and Beth Pitt  
Angela and Tim Ploszaj  
Mary and Lawrence Pocknett  
Mr. and Mrs. Myron J. Poliner  
Mark and Traci Polinsky  
Steven and Halina Potter  
Charles and Janis Potts  
Mr. and Mrs. John F. Poutot  
Annella C. Preble  
Rev. and Mrs. Marsron Price  
\*Cathy and Jim Probulos  
John and Georgette Quilter  
\*Kate and Steven Rakowski, CFA  
John Reed  
Dr. and Mrs. Howard L. Reuben  
Mr. and Mrs. Jeffrey D. Robbins  
Alix Rokita  
Mr. and Mrs. Jerald K. Rome  
\*Rich and Pat Rosien  
Gary Rounseville  
Neil and Lynn Ruenzel  
Ms. Maggi Ryan  
Mary Anne and James Ryan  
James Salvatore  
Anthony and Rita Santostefano  
Ron and Cleora Savitski  
Ann P. Sawicki  
Dr. Robert and Lindley Sawyer  
David and Jane Schaiman  
William J. Scheide  
Yankee Courier Services  
\*Mr. and Mrs. Alan Schiff  
Karl and Judy Schumacher  
Mr. and Mrs. Stephen Schwartz  
Thomas Schwenke, Inc.  
Mr. and Mrs. Edward Scovel  
\*Kathryn Smith and Andrew Seddon  
Ted and Mary Jo Shen

Sonia and Mark Shipman  
Donald and Karen Shier  
Shoreline Electric Car, LLC  
\*Francis and Lorette Simcik  
John and Millie Simonzi  
Mr. and Mrs. David Sloan  
Mr. and Mrs. Lawrence A. Smedberg  
Jack Solan  
\*Alex and MaryAnn Stein  
Joan and Tom Steitz  
Joan and David Stewart  
Tom and Bonnie Stone  
\*Steven Sudigala  
\*Ann Sullivan  
John H. and Susan Sullivan  
Mr. and Mrs. Kenneth Summerer  
Carol Z. Sundlin  
Michael Sundquist and  
Laura Richardson  
Mr. and Mrs. Richard W. Swan  
Mr. Allyn F. Sweet  
Charleen Taylor  
Peter H. Taylor  
Dorothy, Kathleen, Ann &  
Arthur Thompson  
Lincoln Thompson, Jr.  
Mr. and Mrs. John M. Timken  
Jean Titterington  
Mr. and Mrs. James J. Toomey  
Laura and Harold Trinkoff  
Larry Trudeau  
Neal Tuohy, Jr.  
Henry J. Turco  
John and Judy Turpin  
Bruce C. Tuthill  
Strelunkus Bohunkas  
Ragged Rock Marina  
Mr. and Mrs. Edward Voskowsky  
Dr. and Mrs. Milton Wallack  
Jerry and Linda Wanosky  
Burton J. Warner  
Michael and Ellen Wasyl  
\*Claire and Nick Weiler  
Bob and Roz Weinstein  
Ken and Cathy Welch  
\*Mr. and Mrs. Richard M. Wenner  
Mrs. Donald Wheeler  
Michael and Bridget Wheeler  
David and Margaret Wilcox  
Babs and Kate Wilkinson  
\*Dr. Richard and Brenda Williams  
Mr. and Mrs. George W. Wilson  
Mr. Frederick S. Winkley  
Mr. and Mrs. Michael Wolchesky  
Mr. and Mrs. Clifford Wood  
Peter and Joyce Wortman  
Mr. and Mrs. Richard I. Wrubel  
William and Joan H. Wynne  
\*Jim and Mary Yanosy  
March and Lorry Young  
Dr. and Mrs. Francis W. Zak  
Arthur Zieky and Bill Witkowsky  
Mr. Richard Zilinskas  
Dr. and Mrs. James Zwernemann



# GOODSPEED MEMBERSHIP

*Goodspeed Musicals acknowledges the following corporations that have provided matching gift contributions for Goodspeed Members this season. Members with an asterisk (\*) next to their names have received these donations from their employers.*

Aetna Foundation  
American Express Foundation  
American International Group, Inc.  
Amica Companies Foundation  
Argonaut Group, Inc.  
AT&T Foundation  
Bank of America  
Chubb & Son  
CIGNA Corporation  
Diageo North America  
Dominion Foundation  
ExxonMobil Corporation  
Gartner Matching Gift Center  
GE Foundation  
General Re Corporation

GlaxoSmithKline Foundation  
The Hartford Courant  
IBM  
J.P. Morgan Chase Foundation  
Johnson & Johnson  
John Hancock  
Lincoln Financial Group Foundation  
Macy's Foundation  
Mass Mutual Financial Group  
The Meredith Corporation Foundation  
Merrill Lynch  
Mobil Foundation, Incorporated  
New York Times Company Foundation  
The Northrup Grumman Foundation  
NRG Global

Pfizer  
Pfizer Pharmacia  
The Phoenix Companies  
Pitney Bowes  
Prudential  
Saint-Gobain Corporation  
The Stanley Works  
Time Warner  
Travelers Insurance Company  
Unilever  
United Technologies Corporation  
Verizon  
Wachovia

---

*Goodspeed Musicals gratefully acknowledges the following staff for contributing to the 2009 Employee Campaign.*

Anonymous (2)  
William Addison, Jr.  
Robert C. Alwine  
Cinda and Paul Barbuto  
Mr. and Mrs. Sherman D. Baumann  
Linda Benson  
Sara and Neil Breen  
Michael and Lori Cartwright  
Susan M. Cipriani  
Mr. and Mrs. Timothy D'Amato  
Jennifer O. Etheridge  
Paulette Ganoe  
Gloria J. Gorton

R. Glen Grusmark  
Hattie and Terry Guin-Kittner  
Donna Lynn and Jay Hiltan  
Kim Kane  
Erica Largen  
Shanna Lisitano  
Mr. and Mrs. David Loffredo  
Kristan McLaughlin  
Dan McMahon  
Mary Miko and Joseph Migliaro  
Linda Misarski  
Mr. and Mrs. Stephen Moore  
Sarah Moulton

William Nivison  
Michael O'Flaherty  
Will Rhys and Nancy Kluck  
John Riccucci  
Mr. and Mrs. Jeffrey D. Robbins  
Mr. and Mrs. Gerald Rucker  
Samantha Scaniffe  
Elizabeth Smith  
Roger-Paul Snell  
Beryl and Henry Thorpe  
Babs and Kate Wilkinson



# GOODSPEED MUSICALS STAFF

## ADMINISTRATION

Harriett Guin-Kittner..... *General Manager*  
 Edward C. Blaschik..... *Theatre Manager*  
 Mary Miko..... *Associate Theatre Manager*

Donna Tafel..... *Assistant to Michael P. Price*

William F. Nivison..... *Director of Finance*  
 Joanne D'Amato,  
 Samantha Scaniffe..... *Accounting Assistants*

Caitlin A. Quinn..... *Director of Development*  
 Sara Breen..... *Manager of Corporate and  
 Foundation Relations*  
 Gloria Gorton..... *Director of Major Gifts*  
 Sue Cipriani..... *Development Operations Manager*

Dan McMahon..... *Director of Marketing and  
 Public Relations*  
 Lori A. Cartwright..... *Advertising Manager*  
 Elisa G. Hale..... *Public Relations Manager*  
 Diane Sobolewski..... *Official Photographer*  
 Briana M. Bridgewater,  
 Peter Carey..... *Marketing Interns*  
 Nancy Fox..... *Marketing Volunteer*

Michele R. Baumann..... *Member Relations Manager*  
 Shannon Robbins..... *Membership Secretary*

Cinda Abercrombie Barbuto..... *Ticket Sales Manager*  
 Elizabeth Diamond..... *Box Office Manager*  
 Rachael N. Carlson..... *Assistant Box Office Manager*  
 Roger-Paul Snell..... *Box Office Supervisor*  
 Lynn Collins-Rucker, Madeleine Holly,  
 Catherine Joseph, Shayne Lein,  
 Shanna Lisitano, Susanne Rutledge,  
 Barbara Wilkinson..... *Box Office Representatives*  
 William Addison..... *Subscription Services Manager*  
 James Kane, Kim Kane,  
 Linda Misarski, Erica Pape..... *Subscription Services  
 Representatives*  
 Meg C. Chapell..... *Group Sales Manager*

Kristan McLaughlin..... *Company Manager*  
 Kim Carr..... *Assistant Company Manager*  
 Kimberly Tredinnick..... *Company Assistant*

Joshua S. Ritter..... *Education Director/Librarian*  
 Marisa Clement..... *Education Intern*  
 Jeffrey Mays..... *Systems Administrator*  
 Linda Benson..... *Receptionist*

Paulette C. Ganoe,  
 Beryl W. Thorpe..... *House Managers*  
 Barbara Ford, Kim Gowac,  
 Brittany Halleck, Sarah Moulton,  
 Gwen Pond, Diane Rottman..... *Assistant House Managers*  
 David Loffredo, Louie Loffredo,  
 Pat Logan..... *Bartenders*  
 Marilyn Rybak..... *Building Services Assistant*  
 Edward Locke, Stephen Moore,  
 Robert Myska..... *Building Services*

## PRODUCTION

Adam Goodrum..... *Interim Technical Director*  
 Chris Phillips..... *Master Carpenter*  
 Tyler Donahue, Rasta Gronback,  
 Mike Sabourin, Nick Sanborn..... *Shop Carpenters*  
 Mic Murphy..... *Stage Carpenter*

Carla Tiezzi..... *Charge Scenic Artist*  
 Laura Prengaman..... *Staff Scenic*

Ellen Lampros..... *Props Manager*  
 Troy A. Junker..... *Master Artisan*  
 Carrie Capizzano..... *Props Artisan*  
 Thomas Stephansky..... *Journeyman Artisan*  
 Lou Fuchs..... *Props Carpenter*  
 Aaron Peraza-Baker..... *Props Run Crew Head*

John Riccucci..... *Wardrobe Master*  
 Isaac Grnysa..... *Wigs Artisan*

Jay Hilton..... *Lighting and Sound Supervisor*  
 Jennifer Kiser..... *Master Electrician*  
 L. Clay Little..... *Production Electrician*  
 Jessica Murphy..... *Production Sound Engineer*

Erica Largen..... *Assistant Production Manager*

Ian Schugel..... *Music Assistant*

Jennifer O. Etheridge..... *Costume Rental Manager*  
 Dawn Barlow, Sarah Bowen,  
 Susan McCann,  
 Njaye Olds..... *Costume Rental Assistants*

## FOR THIS PRODUCTION

Jennifer Raskopf..... *Costume Design Assistant*  
 Travis McHale..... *Assistant Lighting Designer*  
 Emma Mead..... *Wardrobe Assistant*  
 Lauren Klein, Jamie Kranz..... *Production Assistants*  
 Evan DelGaudio, Mike Lastella, Greg McGuire,  
 Alex Zimovenko..... *Electricians*  
 James Stenborg..... *Music Copyist*  
 Molly Sturges..... *Piano Technician*

Costumes provided by Costume World Theatrical, Deerfield, FL.  
[www.costumeworld.com](http://www.costumeworld.com)

Additional Costumes provided by Timberlake Studios, Inc;  
 John Cowles; Roberta Hamelin

Christine Botta, Krista Franco,  
 Brian Howard, Patti Lizotte,  
 Phyllis Tela, Julia Torrant,  
 Samantha Yaeger..... *Scenic Artists*

Nathan Aldridge, Steph Charaska,  
 Brianne Delroya, Eric Miller,  
 Christopher Steffan..... *Apprentices*

*Elaine McKirdy Student Apprentice:* Alex Jainchill

*Mohegan Sun Apprentice:* Tonett Smith

*William Ivey Long Costume Apprentice:* Monica Johansson

*Special Thanks:* Bank Street Cobbler, Barbara Matera Ltd.

## IN APPRECIATION

Goodspeed Musicals would like to thank the following for their contributions to our productions: all who volunteer their time and talents to Goodspeed, the Goodspeed Opera House usher staff, the Goodspeed Guild and Production Committees, Mae Wantanabe of ZCMI Flower Shop.



## for your INFORMATION

### BOX OFFICE HOURS:

Monday & Tuesday: 10 a.m. – 5 p.m.  
Wednesday & Thursday: 10 a.m. – 8 p.m.  
Friday & Saturday: 10 a.m. – 8:30 p.m.  
Sunday: 10 a.m. – 7 p.m.

**Box Office Telephone:** 860.873.8668

**Box Office E-mail:** [boxoffice@goodspeed.org](mailto:boxoffice@goodspeed.org)

### Bar and Gift Shop:

The Goodspeed Porch Bar and Gift Shop, located on the main floor, are open one hour prior to performances and during intermission.

### Website:

Visit our website at [goodspeed.org](http://goodspeed.org) to buy tickets 24 hours a day or learn more about upcoming and past productions at Goodspeed!

### Infra-red Hearing System:

The Goodspeed Opera House offers the Sennheiser infra-red hearing system to assist hearing-impaired patrons through the generosity of Carol Sirot. Free headsets are available from the box office.

### Special Services:

Goodspeed provides elevator service to the orchestra level of the Opera House. To avoid the steps in front of the theatre, please ask for a House Manager when you arrive. You will be directed to our elevator at street level outside the building. Handicapped parking is located in front of the Gelston House. If you require special assistance of any kind (for example, to remove a theatre seat to accommodate a wheelchair, early admittance to the theatre, or assistance getting to your seats), please inform the Box Office when you purchase your tickets.

### Parking:

Free parking is available to Goodspeed patrons. Turn right after the Gelston House when passing the theatre and free parking is on the right. A path along the river leads from the parking lot across a foot bridge to the theatre.



### Goodspeed Guild:

The Goodspeed Guild is a volunteer organization dedicated to supporting Goodspeed Musicals' operations and productions. Since 1975 it has provided services to artists, patrons, and staff on a year-round basis, while offering its members the opportunity to become part of the behind-the-scenes activities at Goodspeed. To find out about volunteer opportunities that fit your interests and schedule, visit our website at [goodspeed.org](http://goodspeed.org) or contact Amy Campbell at 203.494.7328.

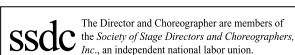
*Sets, costumes, and props are designed especially for the Goodspeed Opera House and are built in Goodspeed Musicals' shops.*

*Goodspeed Musicals is a professional theatre operating under an agreement between the League of Resident Theatres and Actors' Equity Association, the Union of Professional Actors and Stage Managers in the United States. Orchestra members are represented by Middletown Musicians Protective Association, Local 499, American Federation of Musicians.*

Goodspeed Musicals is a member of The League of Resident Theatres.



The scenic, costume, lighting and sound designers in LORT Theatres are represented by United Scenic Artists, Local USA-429 of the IATSE.







# Brushmill

*by the Waterfall*

fine dining & tap room



*open daily*  
lunch • dinner • sunday brunch

129 West Main Street  
Chester, CT 06412

(860) 526-9898

[theBrushmill.com](http://theBrushmill.com)

# Exceptional Caring...

*"The quality of care was exceptional - full of love, dignity, and respect. Thank you from the bottom of our hearts."*



- Short-Term Rehabilitation
- Post-operative Care
- Respite Care
- Admission 7 Days a Week
- Rehabilitation Therapy Available Daily
- IV Therapy
- Resident & Family Education

---

**Company founders winners of the CAHCF Lifetime Achievement Award for delivering the highest quality nursing and rehabilitation care.**

---



**Aaron Manor**  
3 South Wig Hill Rd  
Chester, CT  
(860) 526-5316

**Bel-Air Manor**  
256 New Britain Ave  
Newington, CT  
(860) 666-5689

**Cheshire House**  
3396 East Main St  
Waterbury, CT  
(203) 754-2161

**Greentree Manor**  
4 Greentree Drive  
Waterford, CT  
(860) 442-0647

**Lord Chamberlain**  
7003 Main St  
Stratford, CT  
(203) 375-5894

**Mystic Manor**  
475 High Street  
Mystic, CT  
(860) 536-6070



Ryders Health Management  
Nursing & Rehabilitation Centers  
[www.rydershealth.com](http://www.rydershealth.com)



*Growing takes time.*

*Don't try to rush it.*

When you come in to St. Germain for a Total Financial Advisory, a Certified Financial Planner will review with you your current situation — investments, mortgages, CDs, insurance, assets — and help chart a sensible plan for the future.

Call St. Germain today. **We want to help you grow.**

**ST. GERMAIN**  
INVESTMENT MANAGEMENT



100 Pearl Street, Hartford, CT 06103 • 860-727-9530  
1500 Main Street, Springfield, MA 01115 • 413-733-5111  
Toll Free 800-443-7624 • [stgermaininvestments.com](http://stgermaininvestments.com)



**This is  
no time  
to rest  
on one's  
laurels.**

**If the current financial market has you seeking good advice for the benefit and protection of those you love, call (203) 453-4771 for the peace-of-mind a local bank can provide.**



**Financial  
Management  
& Trust**  
at Guilford Savings Bank  
[gsb-yourbank.com](http://gsb-yourbank.com)

***Estate Planning & Administration • Investment Management • Trustee & Executor Services***  
GUILFORD MAIN • GUILFORD PLAZA • BRANFORD • NORTH BRANFORD • MADISON • NORTH MADISON • OLD SAYBROOK

NOT A DEPOSIT • NOT FDIC INSURED • NOT INSURED BY ANY FEDERAL GOVERNMENT AGENCY • NOT GUARANTEED BY THE BANK  
MAY GO DOWN IN VALUE • SUBJECT TO INVESTMENT RISK • SEEK LEGAL ADVICE REGARDING LEGAL OR TAX MATTERS FROM A QUALIFIED ATTORNEY